

Key:

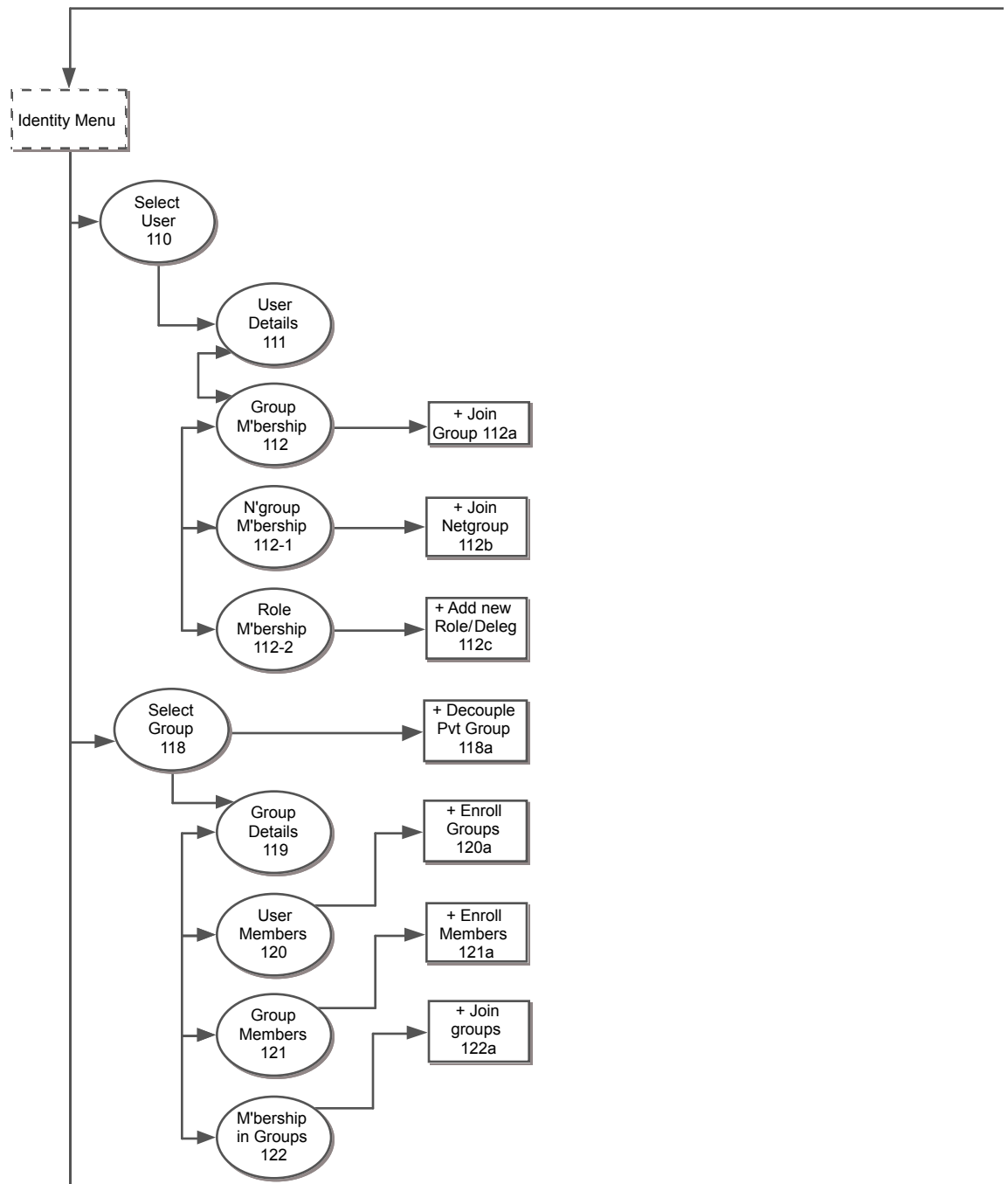
Logical Grouping - not a page

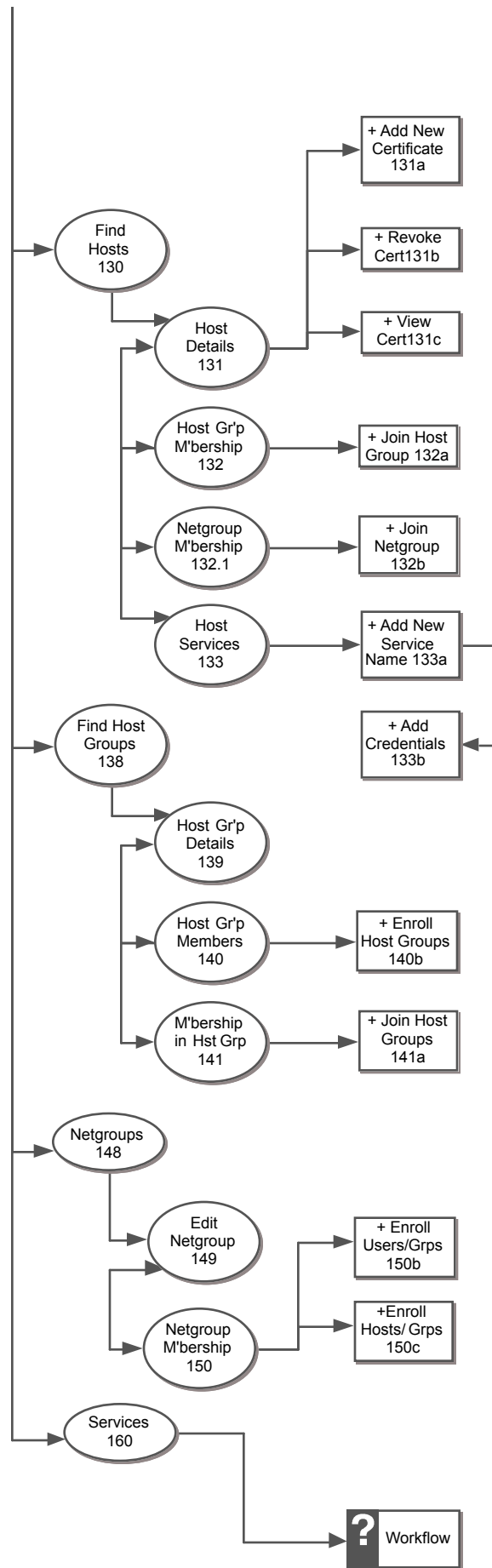
Regular Page

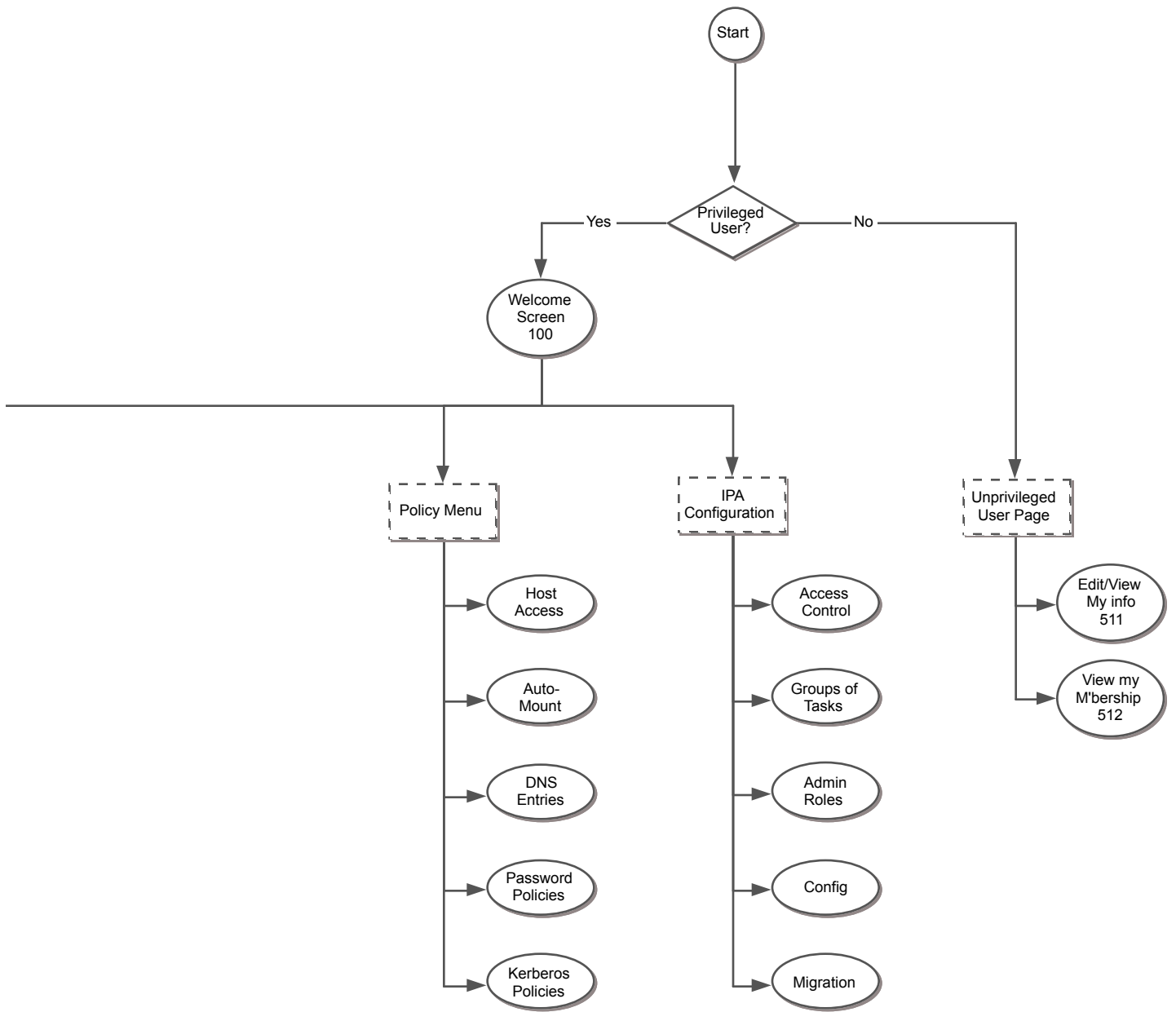
Modal form above screen

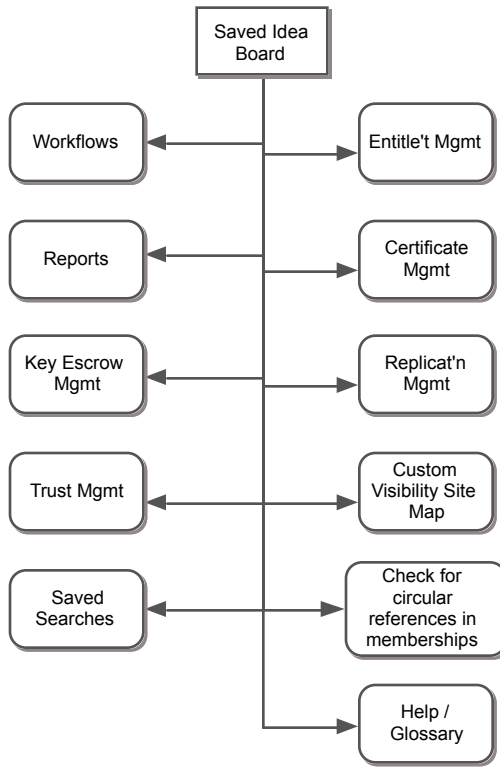
? As yet un-specified

Date: 22-June-2010









Find Users
Screen 110

Identities Policies IPA Config Banner

Manage: Users Groups Hosts Host Groups Services Netgroups

Select User:

Find Add User

Login ID	First Name	Last Name	eMail	Phone	Job Title	Options
						<input type="button" value="D"/> <input type="button" value="U"/> <input type="button" value="G"/> <input type="button" value="J"/> <input type="button" value="-"/>
						<input type="button" value="D"/> <input type="button" value="U"/> <input type="button" value="G"/> <input type="button" value="J"/> <input type="button" value="-"/>

Message Area

Details Memberships in Groups
 Memberships in Netgroups
 Roles Delete User

User Details
111

Identities Policies IPA Config Banner

Manage: Users Groups Hosts Host Groups Services Netgroups

Managing User: Pat D. Bunny

Element: Details Memberships in Groups Memberships in Netgroups Roles

Reset Save Changes

Work Area for Users



Memberships
in Groups
112

Identities Policies IPA Config Banner

Manage: Users Groups Hosts Host Groups Services Netgroups

Managing User: Pat D. Bunny

Element: Details Memberships in Groups Memberships in Netgroups Roles

Find Groups

Name	GID	Description	Options
			<input type="checkbox"/>

Message Area

Withdraw from Group



Join Groups
Screen 112a

Add User Pat D. Bunny to Groups:

Find Groups

Results		Prospective Groups to join
Second floor group	=>	
Management Group	=>	

Cancel Join Groups





Memberships
in Netgroups
112-1

Identities Policies IPA Config Banner

Manage: Users Groups Hosts Host Groups Services Netgroups

Managing User: Pat D. Bunny

Element: Details Memberships in Groups Memberships in Netgroups Roles

Name	GID	Description	Options
			<input type="checkbox"/>

Message Area

Withdraw from Netgroup



Add Netgroup
Screen 112b

Add User Pat D. Bunny to Netgroups :

Find Netgroups

Results		Prospective Netgroups to join
Second floor netgroup	=>	
Management netgroup	=>	

Cancel Join Netgroups

Roles
112-2

Identities Policies IPA Config Banner

Manage: Users Groups Hosts Host Groups Services Netgroups

Managing User: Pat D. Bunny

Element: Details Memberships in Groups Memberships in Netgroups Roles

Name	GID	Description	Options
			<input type="checkbox"/>

Message Area

Remove Role



Assign Roles
Screen 112c

Assign Roles to User Pat D. Bunny

Results		Prospective Roles to Assign
Role number 1	=>	
Delegation 17	=>	





Find Groups
Screen 118

Identities
Policies
IPA Config
Banner

Manage:
Users
Groups
Hosts
Host Groups
Services
Netgroups

Select Group:

Find

+ Add Group

Name	GID	Description	Options
			<input type="checkbox"/> D <input type="checkbox"/> U <input type="checkbox"/> G <input type="checkbox"/> J <input style="float: right;" type="checkbox"/> -
			<input type="checkbox"/> D <input type="checkbox"/> U <input type="checkbox"/> G <input type="checkbox"/> J <input style="float: right;" type="checkbox"/> -

Show Private Groups
 Message Area

D Details
 J Memberships in Groups

U User Members
 - Delete Group

G Group Members





Find Groups
118 - alt

Identities Policies IPA Config Banner

Manage: Users Groups Hosts Host Groups Services Netgroups

Select Group:

Find

Name	GID	Description	Options
			<input type="checkbox"/> DC
			<input type="checkbox"/> DC

Show Private Groups Message Area

DC Decouple Private Group



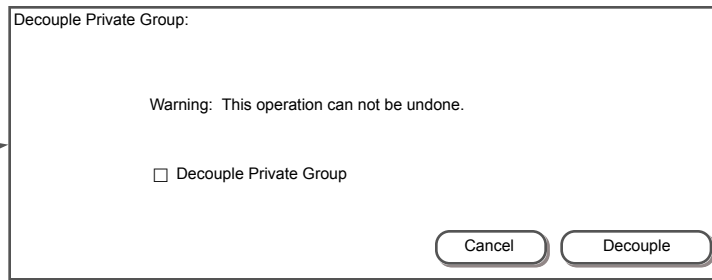
Decouple Private Group
Screen 118a

Decouple Private Group:

Warning: This operation can not be undone.

Decouple Private Group

Cancel Decouple



Group Details
119

Identities Policies IPA Config Banner

Manage: Users Groups Hosts Host Groups Services Netgroups

Managing Group: Admin

Element: Details User Members Group Members Memberships in Groups

Group Name:
Description:
 This is a POSIX Group
 Enter GID manually:



User Members
Screen 120

Identities Policies IPA Config Banner

Manage: Users Groups Hosts Host Groups Services Netgroups

Managing Group: Admin

Element: Details User Members Group Members Memberships in Groups

Login ID	First Name	Last Name	Job Title	Actions
				<input type="button" value="-"/>

Message Area



Add User Members
Screen 120a

Add User Members to Group Admin:

Results		Prospective User Members
John Abel	=>	
Mary Baker	=>	
Jim Cat		





Group Members
Screen 121

Identities Policies IPA Config **Banner**

Manage: Users Groups Hosts Host Groups Services Netgroups

Managing Group: Admin

Element: Details User Members Group Members Memberships in Groups

Name	GID	Description	Options
			<input type="button" value="-"/>

Message Area



Enroll Groups
Screen 121a

Add Group Members to Group Admin:

Find Groups

Results		Prospective Group Members
Second floor group	=>	
Management Group	=>	

Cancel

Add Group Members

Group Members
Screen 122

Identities Policies IPA Config Banner

Manage: Users Groups Hosts Host Groups Services Netgroups

Managing Group: Admin

Element: Details User Members Group Members Memberships in Groups

Name	GID	Description	Options
			<input type="button" value="-"/>

Message Area



Join Groups
Screen 122a

Add Group Admin to other groups:

Results		Prospective Groups to join
Second floor group	=>	
Management Group	=>	

Identities Policies IPA Config **Banner**

Manage: Users Groups **Hosts** Host Groups Services Netgroups

Select Host:

Find Add Host

Host Name	Comment	Client Version	Key?	Options
				<input type="button" value="D"/> <input type="button" value="G"/> <input type="button" value="N"/> <input type="button" value="S"/> <input type="button" value="-"/>
				<input type="button" value="D"/> <input type="button" value="G"/> <input type="button" value="N"/> <input type="button" value="S"/> <input type="button" value="-"/>

Message Area

Details Host Services
 Memberships in Host Groups
 Memberships in Netgroups Delete Host

Identities Policies IPA Config Banner

Manage: Users Groups Hosts Host Groups Services Netgroups

Managing Host: ZimbraMail

Element: Details Memberships in Host Groups Memberships in Netgroups Host Services

Host Details:

Fully-Qualified Domain Name:
Enrolled By:
Date:
Description:

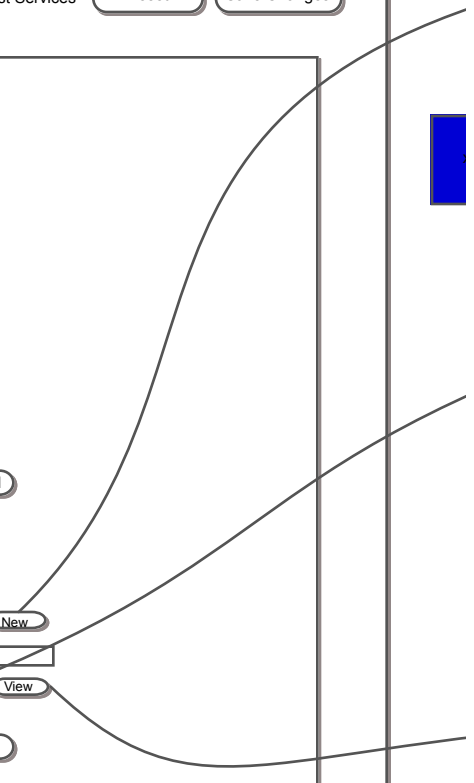
Enrollment:

One-Time Password:
Status: Enrolled Unenrolled

Credentials:

Certificate: Name:
Status: Present Revoked

Kerberos Key: Status: Present Not Present



Issue New Cert
Screen 131a

Issue New Certificate

Subject Name:

Expiration:

Certificate Signing Request:

Get (Download) Certificate when done.

Revoke Cert
Screen 131b

Revoke Certificate

Select Reason:

View Cert
Screen 131c

Issued To:

Common Name	abcd
Organization	<asdf>
Organizational Unit	Apache
Serial Number	12:34

Issued By:

Common Name	abd
Organization	abcd
Organizational Unit	<asdf>

Dates:

Issued On:	7-Mar-2010
Expires On:	1-Jan=2030

Fingerprints

SHA1 Fingerprint	114312431243134
MD5 Fingerprint	123414351434353452



Host Group
Memberships
Screen 132

Identities Policies IPA Config Banner

Manage: Users Groups Hosts Host Groups Services Netgroups

Managing Host: ZimbraMail

Element: Details Memberships in Host Groups Memberships in Netgroups Host Services

Name	Description	Options
		<input type="checkbox"/>

Message Area

Withdraw from Host Group



Add Host Group
Screen 132a

Add Host ZimbraMail to Host Groups

Results	Prospective Host groups to join
Second floor host group Management Host Group	





Netgroup
Memberships
Screen 132.1

Identities Policies IPA Config Banner

Manage: Users Groups Hosts Host Groups Services Netgroups

Managing Host: ZimbraMail

Element: Details Memberships in Host Groups Memberships in Netgroups Host Services

Name	Description	Options
		<input type="checkbox"/>

Message Area

Withdraw from Netgroup



Join Netgroup
Screen 132b

Add Host ZimbraMail to Netgroups

Results	Prospective Netgroups to join
Second floor netgroup => Management netgroup =>	



Host Services
Screen 133

Identities Policies IPA Config Banner

Manage: Users Groups Hosts Host Groups Services Netgroups

Managing Host: ZimbraMail

Element: Details Memberships in Host Groups Memberships in Netgroups Host Services

Name	Description	Options
- Apache - Web App 1 using auth - MS Exchange		<input type="button" value="-"/>

Message Area

Remove Host Service



Add Services
Screen 133a

Add Host Services to Host ZimbraMail

Results	Services to add
Bonjour (New Service)	=> Cups
Apache	=> Bonjour (New Service)
Cups	=>
Wiki	=>

Add Cert/Key
133b

Credentials

Cups on Zimbramail:

Certificate: Name:

Status: Present Revoked

Kerberos Key: Status: Present Not Present

Bonjour on Zimbramail (new service):

Certificate: Name:

Status: Present Revoked

Kerberos Key: Status: Present Not Present

New
131-a

Revoke
131-b

View
131-c



Find Host Groups
Screen 138

Identities Policies IPA Config Banner

Manage: Users Groups Hosts Host Groups Services Netgroups

Select Host Group:

Find Add Host Group

Name	Description	Options
		<input type="button" value="D"/> <input type="button" value="H"/> <input type="button" value="M"/> <input type="button" value="J"/> <input type="button" value="-"/>
		<input type="button" value="D"/> <input type="button" value="H"/> <input type="button" value="M"/> <input type="button" value="J"/> <input type="button" value="-"/>

Message Area

Details
 Host Group Members
 Memberships in Host Groups Delete Host Group

Host Group Details
Screen 139

Identities Policies IPA Config Banner

Manage: Users Groups Hosts Host Groups Services Netgroups

Managing Host Group: Dev-cluster-2

Element: Details My Host Group Members Membership in other Host Groups

Host Group Name:

Description:



Identities Policies IPA Config Banner

Manage: Users Groups Hosts Host Groups Services Netgroups

Managing Host Group: Dev-cluster-2

Element: Details My Host Group Members Membership in other Host Groups

Name	Description	Options
		<input type="button" value="-"/>

Message Area



Enroll Groups
Screen 140b

Enroll groups into membership in Host Group Admin:

Results		Prospective Host Group Members
Second floor host group	=>	
Management host Group	=>	



Identities Policies IPA Config Banner

Manage: Users Groups Hosts Host Groups Services Netgroups

Managing Host Group: Dev-cluster-2

Element: Details My Host Group Members Membership in other Host Groups

Name	Description	Options
		<input type="button" value="-"/>

Message Area

Withdraw from Host Group



Join Host Groups
Screen 141a

Enroll Host Group Admin into membership in the following:

Results		Host Groups to join
Second floor host group	=>	
Management host Group	=>	

