

Key:

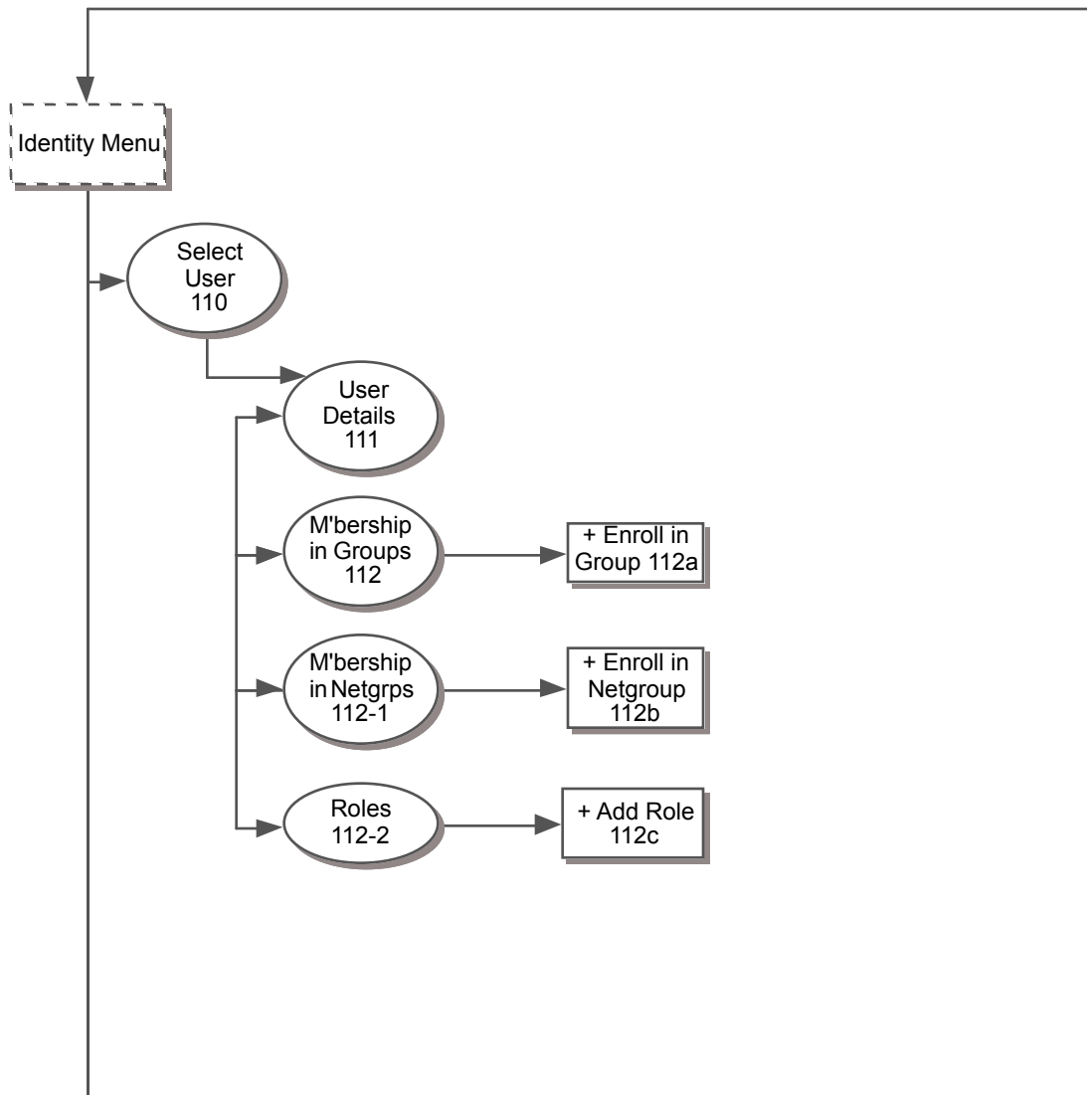
Logical Grouping - not a page

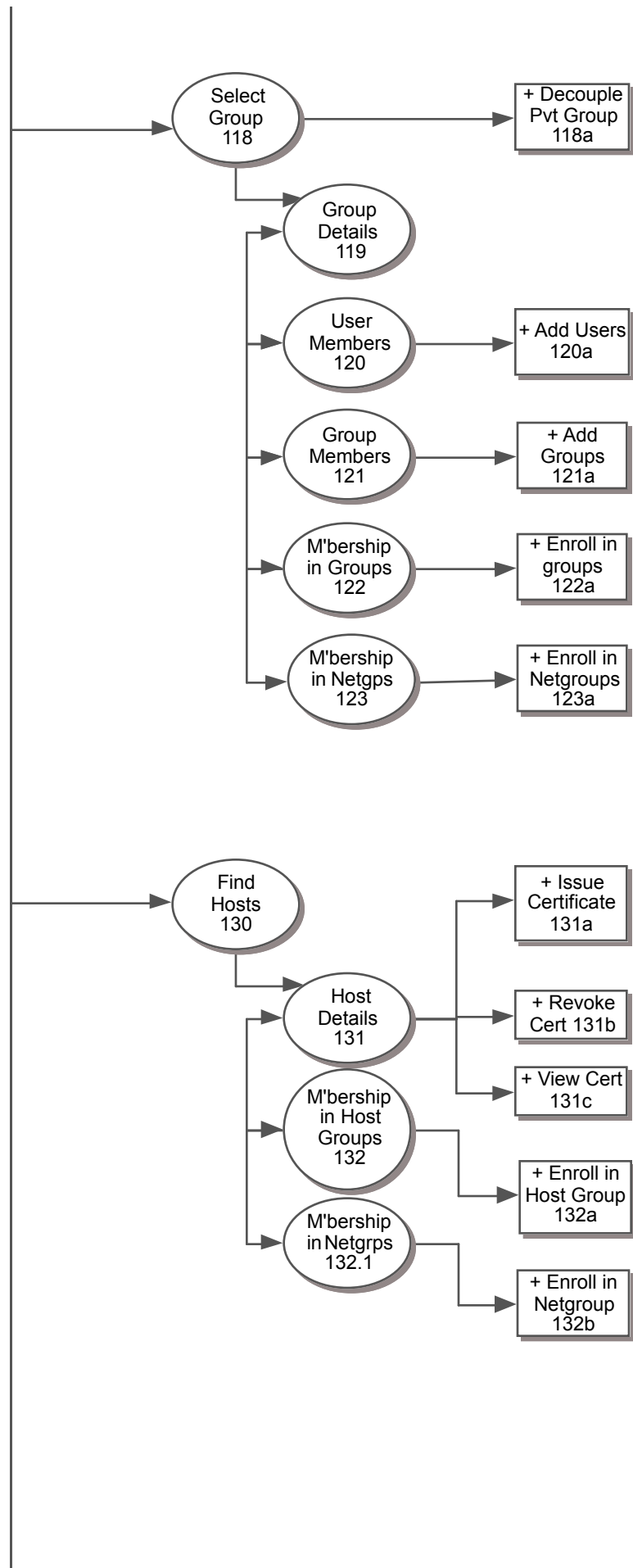
Regular Page

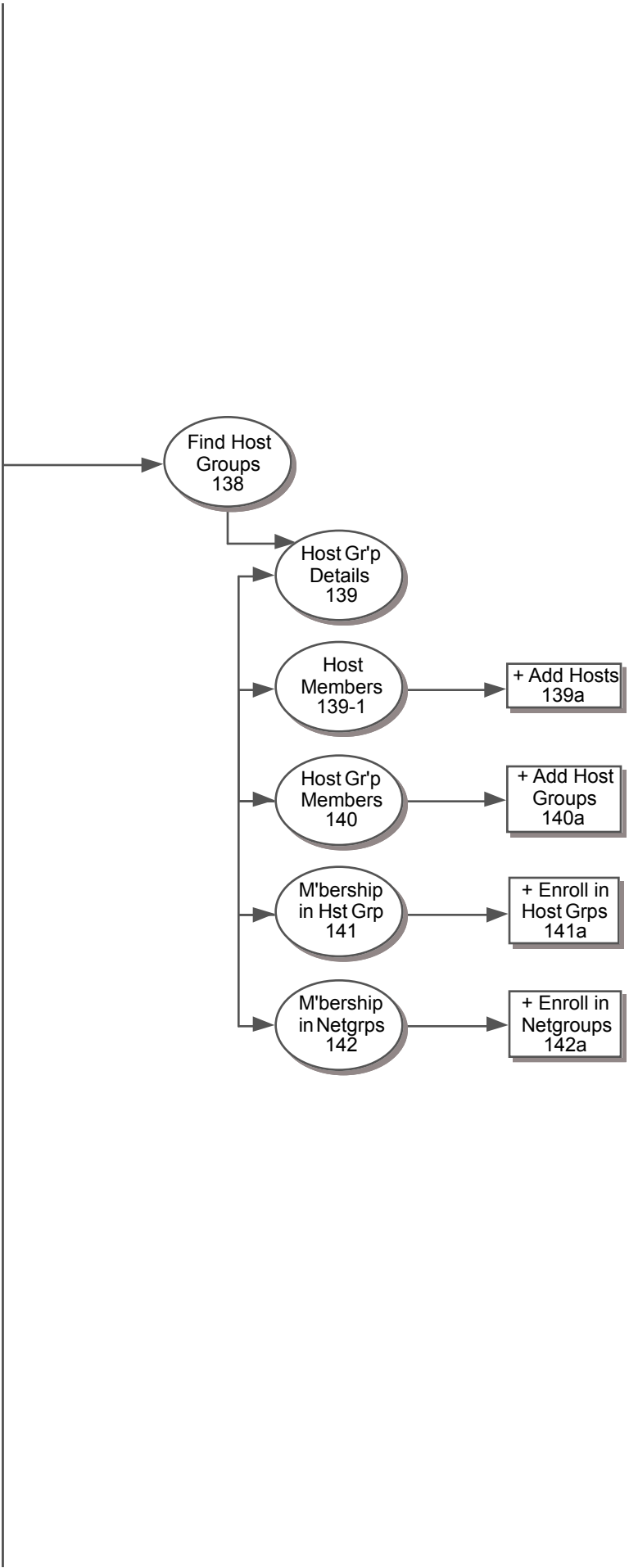
Modal form above screen

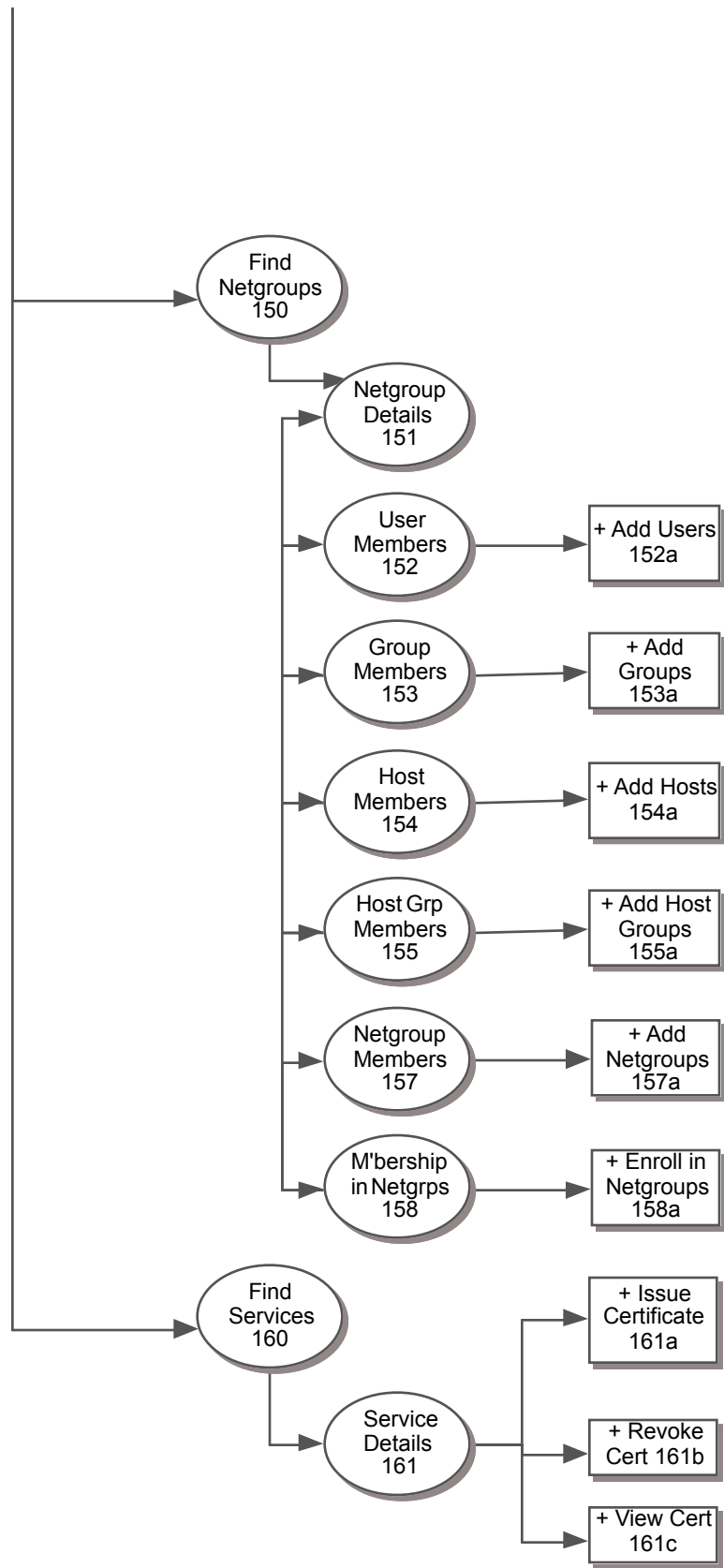
? As yet unspecified

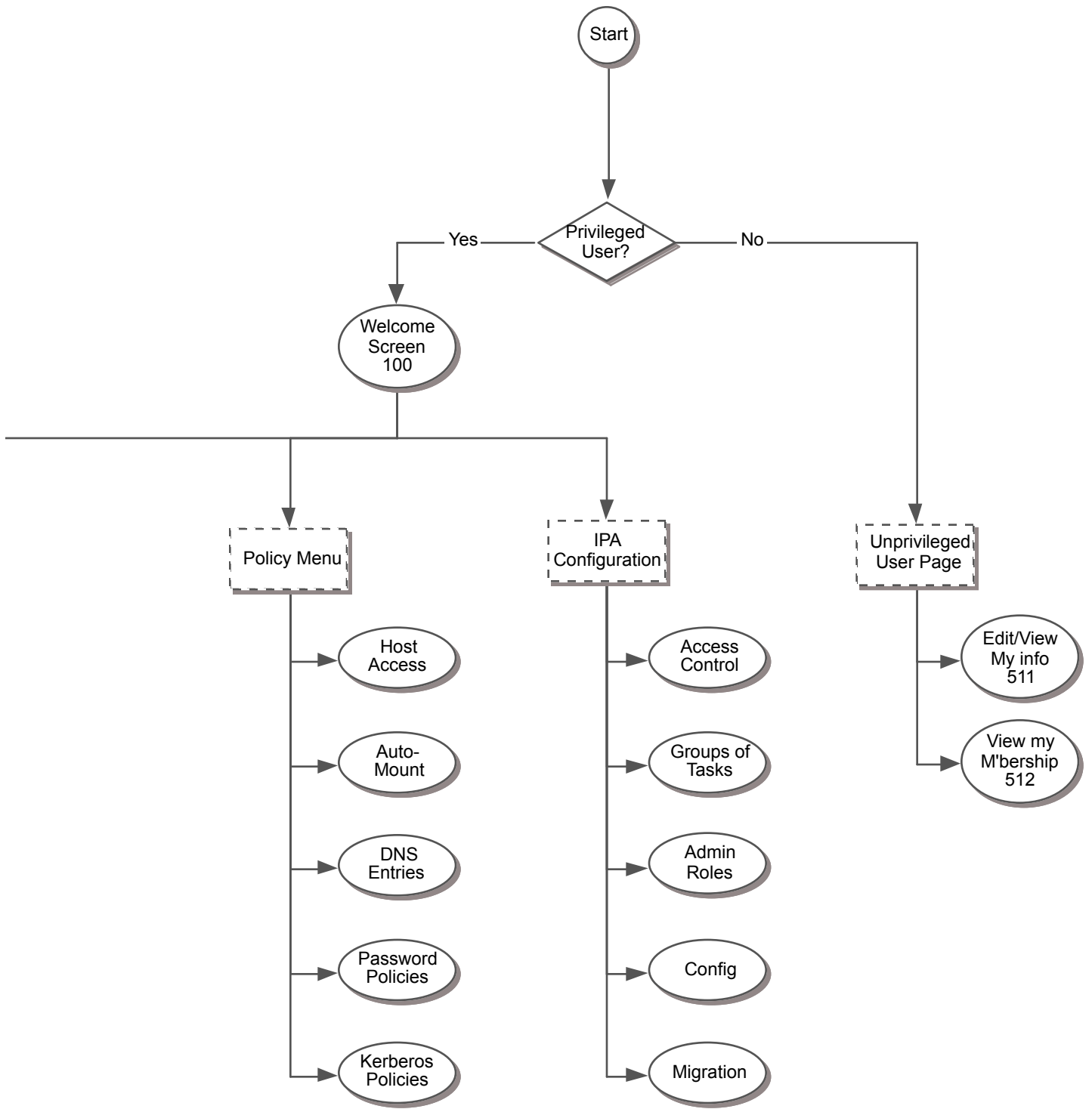
Date: 7-July-2010

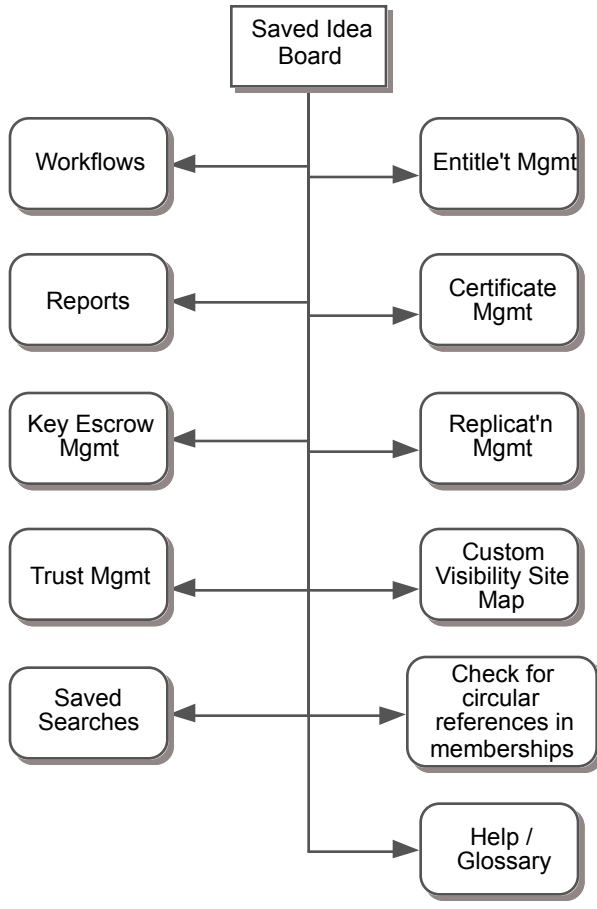












Find Users
Screen 110

Identities Policies IPA Config Banner

Manage: Users Groups Hosts Host Groups Netgroups Services

Select User:

Find User (s) Delete User (s) New User

| User | First Name | Last Name | eMail | Phone | Job Title | Elements |
|------|------------|-----------|-------|-------|-----------|---|
| | | | | | | <input type="button" value="D"/> <input type="button" value="EG"/> <input type="button" value="EN"/> <input type="button" value="R"/> |
| | | | | | | <input type="button" value="D"/> <input type="button" value="EG"/> <input type="button" value="EN"/> <input type="button" value="R"/> |

Message Area

User Details Enrollment in Groups
 Enrollment in Netgroups Roles

User Details
111

Identities Policies IPA Config Banner

Manage: Users Groups Hosts Host Groups Netgroups Services

Managing User: Pat D. Bunny

User : Details Enrollment in **Groups** Enrollment in **Netgroups** **Roles**

Work Area for Users



Memberships
in Groups
112

Identities Policies IPA Config Banner

Manage: Users Groups Hosts Host Groups Netgroups Services

Managing User: Pat D. Bunny

User: Details Enrollment in Groups Enrollment in Netgroups Roles

| Group | GID | Description |
|-------|-----|-------------|
|-------|-----|-------------|

Message Area



User: Enroll in Groups
Screen 112a

Enroll User Pat D. Bunny in Group (s)

| Group | GID | Description | | Prospective Group Enrollment(s) |
|------------|------|---------------------------|-----|---------------------------------|
| Admin | 1234 | All IT Administrators | | <== Commuters |
| Westford | N/A | All employees living i... | ==> | <== Legal Dept. |
| Developers | N/A | Internal and External ... | ==> | |

Message Area

* Enter group name and press Find Groups
* Click "==" to tag each group you want to enroll in
* Click "<==" to remove improperly tagged groups





Memberships
in Netgroups
112-1

Identities Policies IPA Config Banner

Manage: Users Groups Hosts Host Groups Netgroups Services

Managing User: Pat D. Bunny

User: Details Enrollment in Groups Enrollment in Netgroups Roles

| Netgroup | Description |
|----------|-------------|
| | |

Message Area



User: Enroll in Netgroup
Screen 112b

Enroll **User** Pat D. Bunny in **Netgroup(s)**

| Netgroup | Description | | Prospective Netgroup Enrollment(s) |
|------------|-------------------------------|-----|------------------------------------|
| Admin | All IT Administrator's Hosts | | <== Public Access |
| Westford | All hosts in Westford | ==> | <== Legal Dept Hosts |
| Developers | All protected developer ho... | ==> | |

Message Area

* Enter netgroup name and press Find Netgroups
* Click "==" to tag each netgroup you want to enroll in
* Click "<==" to remove improperly tagged netgroups

Roles
112-2

Identities Policies IPA Config Banner

Manage: Users Groups Hosts Host Groups Netgroups Services

Managing User: Pat D. Bunny

User: Details Enrollment in Groups Enrollment in Netgroups Roles

| Role | Description |
|------|-------------|
|------|-------------|

Message Area



User: Add Roles
Screen 112c

Add **Role(s)** to **User Pat D. Bunny**

| Role | Description | Prospective Roles (s) |
|--------------|---------------------------------|-----------------------|
| Admin L1 | Basic functions for entry le... | <== Basic Employee |
| Master Admin | All privileges | ==> |
| Developer | Access to developer asset... | ==> |

Message Area

* Enter role name and press Find Roles
* Click "==" to tag each role you want to add
* Click "<==" to remove improperly tagged roles



Find Groups
Screen 118

Identities
Policies
IPA Config
Banner

Manage:
Users
Groups
Hosts
Host Groups
Netgroups
Services

Select Group:

Find Group(s)
- Delete Group(s)
+ New Group

| Group | GID | Description | Elements |
|-------|-----|-------------|--|
| | | | <input type="checkbox"/> D <input type="checkbox"/> MU <input type="checkbox"/> MG <input type="checkbox"/> EG <input type="checkbox"/> EN |
| | | | <input type="checkbox"/> D <input type="checkbox"/> MU <input type="checkbox"/> MG <input type="checkbox"/> EG <input type="checkbox"/> EN |

Show Public Groups
 Show Private Groups
 Message Area

| | |
|--|---|
| <input type="checkbox"/> Group Details | <input type="checkbox"/> Member Users |
| <input type="checkbox"/> Member Groups | <input type="checkbox"/> Enrollment in other Groups |
| <input type="checkbox"/> Enrollment in Netgroups | |





Find Groups
118 - alt

Identities Policies IPA Config Banner

Manage: Users Groups Hosts Host Groups Netgroups Services

Select Group:

| Group | GID | Description |
|-------|-----|-------------|
| | | |

Show Public Groups Show Private Groups Message Area



Decouple Private Group
Screen 118a

Decouple **Private Group** Foo from **User** Pat D. Bunny

Alert: This is an advanced operation and can not be un-done.
To confirm your intention to decouple private group Foo from user Pat D. Bunny, check the box below, and click the "Decouple" button.

Decouple **Private Group** Foo

Cancel Decouple

Group Details
119

Identities Policies IPA Config Banner

Manage: Users Groups Hosts Host Groups Netgroups Services

Managing Group: Admin

Group: Details Member **Users** Member **Groups** Enrollment in other **Groups** Enrollment in **Netgroups**

Group Details:

Group Name:

Description:

This is a POSIX Group

Enter GID manually:



User Members
Screen 120

Identities Policies IPA Config Banner

Manage: Users Groups Hosts Host Groups Netgroups Services

Managing Group: Admin

Group: Details Member Users Member Groups Enrollment in other Groups Enrollment in Netgroups

| User | First Name | Last Name | Job Title |
|------|------------|-----------|-----------|
|------|------------|-----------|-----------|

Message Area



Group: Add Users
Screen 120a

Add **User(s)** to **Group** Foo

| User | Last | First | Department | | Prospective User(s) |
|--------|-------|-------|-------------|-----|-----------------------|
| JAbel | Abel | James | Finance | | <== Freddy Thomlinson |
| JoAbel | Abel | Jonas | Engineering | ==> | <== Mary Baker |
| MBaker | Baker | Mary | HR | ==> | |

Message Area

* Enter user name and press Find Users
* Click "==" to tag each user you want to add
* Click "<==" to remove improperly tagged users





Group Members
Screen 121

Identities Policies IPA Config **Banner**

Manage: Users Groups Hosts Host Groups Netgroups Services

Managing Group: Admin

Group: Details Member Users Member Groups Enrollment in other Groups Enrollment in Netgroups

| Group | GID | Description |
|-------|-----|-------------|
| | | |

Message Area



Group: Add Groups
Screen 121a

Add Group(s) to Group Foo

Find Group(s)

| Group | GID | Description | | Prospective Group(s) |
|------------|------|---------------------------|-----|----------------------|
| Admin | 1234 | All IT Administrators | | <== Commuters |
| Westford | N/A | All employees living i... | ==> | <== Legal Dept. |
| Developers | N/A | Internal and External ... | ==> | |

Message Area

* Enter group name and press Find Groups
* Click "==" to tag each group you want to add
* Click "<==" to remove improperly tagged groups

Cancel Add Group(s)

Group Members
Screen 122

Identities Policies IPA Config Banner

Manage: Users Groups Hosts Host Groups Netgroups Services

Managing Group: Admin

Group: Details Member Users Member Groups Enrollment in other Groups Enrollment in Netgroups

| Name | GID | Description |
|------|-----|-------------|
|------|-----|-------------|

Message Area



Group: Enroll in Groups
Screen 122a

Enroll **Group** Foo in other **Group** (s)

| Group | GID | Description | Prospective Group Enrollment(s) |
|------------|------|-------------------------------|---------------------------------|
| Admin | 1234 | All IT Administrators | <== Commuters |
| Westford | N/A | All employees living i... ==> | <== Legal Dept. |
| Developers | N/A | Internal and External ... ==> | |

Message Area

* Enter group name and press Find Groups
* Click "==" to tag each group you want to enroll in
* Click "<==" to remove improperly tagged groups

Netgroup Members
Screen 123

Identities Policies IPA Config Banner

Manage: Users Groups Hosts Host Groups Netgroups Services

Managing Group: Admin

Group: Details Member Users Member Groups Enrollment in other Groups Enrollment in Netgroups

| Netgroup | Description |
|----------|-------------|
| | |
| | |
| | |

Message Area



Group: Enroll in Netgroup
Screen 123a

Enroll Group Foo in Netgroup(s)

| Netgroup | Description | | Prospective Netgroup Enrollment(s) |
|------------|-------------------------------|-----|------------------------------------|
| Admin | All IT Administrator's Hosts | | <== Public Access |
| Westford | All hosts in Westford | ==> | <== Legal Dept Hosts |
| Developers | All protected developer ho... | ==> | |

Message Area

* Enter netgroup name and press Find Netgroups
* Click "==" to tag each netgroup you want to enroll in
* Click "<==" to remove improperly tagged netgroups



Identities Policies IPA Config **Banner**

Manage: Users Groups **Hosts** Host Groups Netgroups Services

Select Host:

Find Host (s) Delete Host (s) New Host

| Host | Comment | Enrolled? | Managed? | Elements |
|------|---------|-----------|----------|--|
| | | | | <input type="button" value="D"/> <input type="button" value="EX"/> <input type="button" value="EN"/> |
| | | | | <input type="button" value="D"/> <input type="button" value="EX"/> <input type="button" value="EN"/> |

Show Managed Hosts Show Unmanaged Hosts Message Area

Host Details Enrollment in Host Groups
 Enrollment in Netgroups



Host Details
Screen 131-pre

Identities Policies IPA Config Banner

Manage: Users Groups Hosts Host Groups Netgroups Services

Managing Host: ZimbraMail

Host: Details Enrollment in Host Groups Enrollment in Netgroups

Host Details:

Fully-Qualified Domain Name:

You must successfully resolve the domain name to continue.



Host Details
Screen 131-
post

Identities Policies IPA Config Banner

Manage: Users Groups Hosts Host Groups Netgroups Services

Managing Host: ZimbraMail

Host: Details Enrollment in Host Groups Enrollment in Netgroups Reset Save Changes

Host Details:

Fully-Qualified Domain Name:

Enrolled By:

Date:

Description:

Enrollment:

Status: Enrolled, Kerberos Key Present Delete Key, Unenroll

Kerberos Key Not Present

Enroll via One-Time-Password: Set OTP

Host Certificate:

Status: Valid Certificate Present Get Revoke View

Certificate Revoked:

No Valid Certificate: New Certificate

Services:

[Manage Services](#) for this Host



Host: Revoke Cert
Screen 131b

Revoke Certificate FooBarCertificate for Host Foo

Alert: This is an advanced operation and can not be un-done.
To confirm your intention to revoke this certificate, select a reason from the pull-down list, and click the "Revoke" button.

Reason for Revocation:

Host: View Cert
Screen 131c

Certificate FooBarCertificate for Host Foo

Issued To:
Common Name: abcd
Organization: <asdf>
Organizational Unit: Apache
Serial Number: 12:34

Issued By:
Common Name: abcd
Organization: abcd
Organizational Unit: <asdf>

Dates:
Issued On: 7-Mar-2010
Expires On: 1-Jan=2030

Fingerprints
SHA1 Fingerprint: 114312431243134
MD5 Fingerprint: 123414351434353452

Host: Issue New Cert
Screen 131a

Issue New Certificate for Host foo

Subject Name:

Expiration:

Certificate Signing Request:

Get (Download) Certificate when done.



Host Group
Memberships
Screen 132

Identities Policies IPA Config Banner

Manage: Users Groups Hosts Host Groups Netgroups Services

Managing Host: ZimbraMail

Host: Details Enrollment in Host Groups Enrollment in Netgroups

| Host Group | Description |
|------------|-------------|
|------------|-------------|

Message Area



Host: Enroll in Host Group
Screen 132a

Enroll Host Foo in Host Group(s)

Find Host Group(s)

| Host Group | Description | | Prospective Host Group | Enrollment(s) |
|------------|-------------------------------|-----|------------------------|------------------|
| Admin | All IT Administrator's Hosts | | <== | Public Access |
| Westford | All hosts in Westford | ==> | <== | Legal Dept Hosts |
| Developers | All protected developer ho... | ==> | | |

Message Area

* Enter host group name and press Find Host Groups
* Click "==" to tag each host group you want to enroll in
* Click "<==" to remove improperly tagged host groups

Cancel Enroll Host





Netgroup
Memberships
Screen 132.1

BannerIdentities Policies IPA Config

Manage: Users Groups Hosts Host Groups Netgroups Services

Managing Host: ZimbraMail

Host: Details Enrollment in Host Groups Enrollment in Netgroups

| Netgroup | Description |
|----------|-------------|
| | |

Message Area



Host: Enroll in Netgroup
Screen 132b

Enroll Host Foo in Netgroup(s)

| Netgroup | Description | | Prospective Netgroup Enrollment(s) |
|------------|-------------------------------|-----|------------------------------------|
| Admin | All IT Administrator's Hosts | | <== Public Access |
| Westford | All hosts in Westford | ==> | <== Legal Dept Hosts |
| Developers | All protected developer ho... | ==> | |

Message Area

* Enter netgroup name and press Find Netgroups
* Click "==" to tag each netgroup you want to enroll in
* Click "<==" to remove improperly tagged netgroups

Find Host Groups
Screen 138

Identities Policies IPA Config **Banner**

Manage: Users Groups Hosts **Host Groups** Netgroups Services

Select Host Group:

Find Host Group (s) Delete Host Group (s) New Host Group

| Host Group | Description | Elements |
|------------|-------------|--|
| | | <input type="button" value="D"/> <input type="button" value="MH"/> <input type="button" value="MX"/> <input type="button" value="EX"/> <input type="button" value="EN"/> |
| | | <input type="button" value="D"/> <input type="button" value="MH"/> <input type="button" value="MX"/> <input type="button" value="EX"/> <input type="button" value="EN"/> |

Message Area

Host Group Details **Member Hosts**
 Member Host Groups **Enrollment in other Host Groups**
 Enrollment in Netgroups

Host Group Details
Screen 139

Identities Policies IPA Config Banner

Manage: Users Groups Hosts Host Groups Netgroups Services

Managing Host Group: Dev-cluster-2

Host Group: Details Member Hosts Member Host Groups Enrollment in other Host Groups Enrollment in Netgroups Reset Save Changes

Host Group Details:

Host Group Name:

Description:



Host Members
Screen 139-1

Identities Policies IPA Config Banner

Manage: Users Groups Hosts Host Groups Netgroups Services

Managing Host Group: Dev-cluster-2

Host Group: Details Member Hosts Member Host Groups Enrollment in other Host Groups Enrollment in Netgroups

| Host | Comment | Enrolled? | Managed? |
|------|---------|-----------|----------|
|------|---------|-----------|----------|

Show Managed Hosts Show Unmanaged Hosts Message Area



Host Group: Add Hosts
Screen 139a

Add Host(s) to Host Group Foo

| Host | Description | | Prospective Host(s) | Managed? |
|------------------|-------------------------------|-----|---------------------|----------|
| Cheech and Ch... | (Unmanaged Host) | ==> | <== Developer153 | Y |
| Admin12 | Host dedicated to IT Admin... | ==> | <== Barnacre Corner | N |
| Westford13 | Host deployed in Westford | ==> | | |
| Developer23 | Host used by developer st... | ==> | | |

Message Area

* Enter host name and press Find Hosts
* Results will contain an entry for an unmanaged host, as well as all managed matches
* Click "==" to tag each host you want to add
* Click "<==" to remove improperly tagged hosts



Identities Policies IPA Config Banner

Manage: Users Groups Hosts Host Groups Netgroups Services

Managing Host Group: Dev-cluster-2

Host Group: Details Member Hosts Member Host Groups Enrollment in other Host Groups Enrollment in Netgroups

| Name | Description |
|------|-------------|
| | |
| | |
| | |

Message Area



Host Groups: Add Host Group
Screen 140a

Add Host Group (s) to Host Group Foo

Find Host Group(s)

| Host Group | Description | Prospective Host Group (s) |
|------------|-------------------------------|----------------------------|
| Admin | All IT Administrator's Hosts | <== Public Access |
| Westford | All hosts in Westford | <== Legal Dept Hosts |
| Developers | All protected developer ho... | ==> |

Message Area

* Enter host group name and press Find Host Groups
* Click "==" to tag each host group you want to add
* Click "<==" to remove improperly tagged host groups

Cancel Add Host Group (s)



Memberships in
Host Groups
Screen 141

Identities Policies IPA Config Banner

Manage: Users Groups Hosts Host Groups Netgroups Services

Managing Host Group: Dev-cluster-2

Host Group: Details Member Hosts Member Host Groups Enrollment in other Host Groups Enrollment in Netgroups

| Host Group | Description |
|------------|-------------|
| | |

Message Area



Host Group: Enroll in Host Groups
Screen 141a

Enroll **Host Group** Foo in other **Host Group** (s)

| Host Group | Description | | Prospective Host Group Enrollment(s) |
|------------|-------------------------------|-----|--------------------------------------|
| Admin | All IT Administrator's Hosts | | <== Public Access |
| Westford | All hosts in Westford | ==> | <== Legal Dept Hosts |
| Developers | All protected developer ho... | ==> | |

Message Area

* Enter host group name and press Find Host Groups
* Click "==" to tag each host group you want to enroll in
* Click "<==" to remove improperly tagged host groups



Netgroup Members
Screen 142

Identities Policies **IPA Config** Banner

Manage: Users Groups Hosts **Host Groups** Netgroups Services

Managing Host Group: Dev-cluster-2

Host Group: Details Member Hosts Member Host Groups Enrollment in other Host Groups Enrollment in Netgroups

| Netgroup | Description |
|----------|-------------|
|----------|-------------|

Message Area



Host Group: Enroll in Netgroup
Screen 142a

Enroll **Host Group** Foo in **Netgroup(s)**

| Netgroup | Description | Prospective Netgroup Enrollment(s) |
|------------|-------------------------------|------------------------------------|
| Admin | All IT Administrator's Hosts | <== Public Access |
| Westford | All hosts in Westford | <== Legal Dept Hosts |
| Developers | All protected developer ho... | ==> |

Message Area

* Enter netgroup name and press Find Netgroups
* Click "==" to tag each netgroup you want to enroll in
* Click "<==" to remove improperly tagged netgroups



Find Netgroups
Screen 150

Identities Policies IPA Config **Banner**

Manage: Users Groups Hosts Host Groups **Netgroups** Services

Select Netgroup :

Find Netgroup (s) Delete Netgroup (s) New Netgroup

| Netgroup | Description | Elements |
|----------|-------------|--|
| | | <input type="button" value="D"/> <input type="button" value="MU"/> <input type="button" value="MG"/> <input type="button" value="MH"/> <input type="button" value="MX"/> <input type="button" value="MN"/> <input type="button" value="EN"/> |
| | | <input type="button" value="D"/> <input type="button" value="MU"/> <input type="button" value="MG"/> <input type="button" value="MH"/> <input type="button" value="MX"/> <input type="button" value="MN"/> <input type="button" value="EN"/> |

Message Area

Netgroup Details Member **Users** Member **Groups**
 Member **Hosts** Member **Host Groups**
 Member **Netgroups** Enrollment in other **Netgroups**

Netgroup
Details 151

Identities Policies IPA Config Banner

Manage: Users Groups Hosts Host Groups Netgroups Services

Managing Netgroup : Foo

Netgroup: Details Member Users Member Groups Member Hosts Member Host Groups Member Netgroups Enrollment in other Netgroups

Netgroup Details:

Netgroup Name:

Domain Name:

Description:

User Members
Screen 152

Identities Policies IPA Config Banner

Manage: Users Groups Hosts Host Groups Netgroups Services

Managing Netgroup : Foo

Netgroup: Details Member Users Member Groups Member Hosts Member Host Groups Member Netgroups Enrollment in other Netgroups

| User | First Name | Last Name | Job Title |
|------|------------|-----------|-----------|
| | | | |

Message Area



Netgroup: Add Users
Screen 152a

Add User(s) to Netgroup Foo

Find Users(s)

| User | Last | First | Department | | Prospective User(s) |
|--------|-------|-------|-------------|-----|-----------------------|
| JAbel | Abel | James | Finance | | <== Freddy Thomlinson |
| JoAbel | Abel | Jonas | Engineering | ==> | <== Mary Baker |
| MBaker | Baker | Mary | HR | ==> | |

Message Area

* Enter user name and press Find Users
* Click "==" to tag each user you want to add
* Click "<==" to remove improperly tagged users

Cancel Add User(s)



Group Members
Screen 153

Identities Policies IPA Config Banner

Manage: Users Groups Hosts Host Groups Netgroups Services

Managing Netgroup : Foo

Netgroup: Details Member Users Member Groups Member Hosts Member Host Groups Member Netgroups Enrollment in other Netgroups

| Group | GID | Description |
|-------|-----|-------------|
| | | |
| | | |
| | | |

Message Area



Netgroup : Add Groups
Screen 153a

Add Group (s) to Netgroup Foo

Find Group(s)

| Group | GID | Description | Prospective Group (s) |
|------------|------|---------------------------|-----------------------|
| Admin | 1234 | All IT Administrators | <== Commuters |
| Westford | N/A | All employees living i... | <== Legal Dept. |
| Developers | N/A | Internal and External ... | |

Message Area

* Enter group name and press Find Groups
* Click "==" to tag each group you want to add
* Click "<==" to remove improperly tagged grouped

Cancel Add Group(s)

Host Members
Screen 154

Identities Policies **IPA Config** Banner

Manage: Users Groups **Hosts** Host Groups Netgroups Services

Managing Netgroup : Foo

Netgroup: Details Member Users Member Groups Member Hosts Member Host Groups Member Netgroups Enrollment in other Netgroups

| Host | Comment | Enrolled? | Managed? |
|------|---------|-----------|----------|
|------|---------|-----------|----------|

Show Managed Hosts Show Unmanaged Hosts Message Area



Netgroup: Add Host
Screen 154a

Add Host(s) to Netgroup Foo

| Host | Description | | Prospective Host(s) | Managed? |
|------------------|-------------------------------|-----|---------------------|----------|
| Cheech and Ch... | (Unmanaged Host) | ==> | <== Developer153 | Y |
| Admin12 | Host dedicated to IT Admin... | ==> | <== Barnacre Corner | N |
| Westford13 | Host deployed in Westford | ==> | | |
| Developer23 | Host used by developer st... | ==> | | |

Message Area

* Enter host name and press Find Hosts
* Results will contain an entry for an unmanaged host, as well as all managed matches
* Click "==" to tag each host you want to add
* Click "<==" to remove improperly tagged hosts

Identities Policies IPA Config **Banner**

Manage: Users Groups Hosts **Host Groups** Netgroups Services

Managing Netgroup : Foo

Netgroup: Details Member Users Member Groups Member Hosts Member **Host Groups** Member Netgroups Enrollment in other Netgroups

| Host Group | Description |
|------------|-------------|
|------------|-------------|

Message Area



Netgroups : Add Host Group
Screen 155a

Add Host Group (s) to Netgroup Foo

Find Host Group(s)

| Host Group | Description | | Prospective Host Group (s) |
|------------|-------------------------------|-----|----------------------------|
| Admin | All IT Administrator's Hosts | | <== Public Access |
| Westford | All hosts in Westford | ==> | <== Legal Dept Hosts |
| Developers | All protected developer ho... | ==> | |

Message Area

* Enter host group name and press Find Host Groups
* Click "==" to tag each host group you want to add
* Click "<==" to remove improperly tagged host groups

Cancel Add Host Group (s)

Netgroup Members
Screen 157

Identities Policies **IPA Config** Banner

Manage: Users Groups Hosts Host Groups **Netgroups** Services

Managing Netgroup : Foo

Netgroup: Details Member Users Member Groups Member Hosts Member Host Groups Member Netgroups Enrollment in other Netgroups

| Netgroup | Description |
|----------|-------------|
| | |

Message Area



Netgroups : Add Netgroup
Screen 157a

Add **Netgroup(s)** to **Netgroup** Foo

| Netgroup | Description | | Prospective Netgroup(s) |
|------------|-------------------------------|-----|-------------------------|
| Admin | All IT Administrator's Hosts | | <== Public Access |
| Westford | All hosts in Westford | ==> | <== Legal Dept Hosts |
| Developers | All protected developer ho... | ==> | |

Message Area

* Enter netgroup name and press Find Netgroups
* Click "==" to tag each netgroup you want to add
* Click "<==" to remove improperly tagged netgroups

Netgroup Members
Screen 158

Identities Policies IPA Config Banner

Manage: Users Groups Hosts Host Groups Netgroups Services

Managing Netgroup : Foo

Netgroup: Details Member Users Member Groups Member Hosts Member Host Groups Member Netgroups Enrollment in other Netgroups

| Netgroup | Description |
|----------|-------------|
|----------|-------------|

Message Area



Netgroup : Enroll in Netgroups
Screen 158a

Enroll **Netgroup** Foo in other **Netgroup**(s)

| Netgroup | Description | | Prospective Netgroup Enrollment(s) |
|------------|-------------------------------|-----|------------------------------------|
| Admin | All IT Administrator's Hosts | | <== Public Access |
| Westford | All hosts in Westford | ==> | <== Legal Dept Hosts |
| Developers | All protected developer ho... | ==> | |

Message Area

* Enter netgroup name and press Find Netgroups
* Click "==" to tag each netgroup you want to enroll in
* Click "<==" to remove improperly tagged netgroups

Find Services
Screen 160

Identities Policies IPA Config Banner

Manage: Users Groups Hosts Host Groups Netgroups Services

Select Service:

Find **Service** - Delete **Service(s)** + New **Service**

| Service Principle | Service Type | Fully Qualified Domain | Elements |
|-------------------|--------------|------------------------|----------|
| | | | D |
| | | | D |

Message Area

D **Service Details**





Host Details
Screen 161-pre

Identities Policies IPA Config Banner

Manage: Users Groups Hosts Host Groups Netgroups Services

Managing Service

Service: Details Reset Save Changes

Host Details:

Fully-Qualified Domain Name:

You must successfully resolve the domain name to continue.



Identities Policies IPA Config Banner

Manage: Users Groups Hosts Host Groups Netgroups Services

Managing Service

Service: Details

Service Details:

Fully-Qualified Domain Name:

Service Name:

I become active if user chooses: "New" above

Enrollment:

Status: Enrolled, Kerberos Key Present
 Kerberos Key Not Present
[Manage Key](#) for this Host

Host/Service Certificate:

Status: Valid Certificate Present

 Certificate Revoked:
 No Valid Certificate:



Service: Revoke Cert
Screen 161b

Revoke Certificate FooBarCertificate for **Service Foo**

Alert: This is an advanced operation and can not be un-done.
To confirm your intention to revoke this certificate, select a reason from the pull-down list, and click the "Revoke" button.

Reason for Revocation:

Service: View Cert
Screen 161c

Certificate FooBarCertificate for **Service Foo**

Issued To:
Common Name abcd
Organization <asdf>
Organizational Unit Apache
Serial Number 12:34

Issued By:
Common Name abd
Organization abcd
Organizational Unit <asdf>

Dates:
Issued On: 7-Mar-2010
Expires On: 1-Jan=2030

Fingerprints
SHA1 Fingerprint 114312431243134
MD5 Fingerprint 123414351434353452

Service: Issue New Cert
Screen 161a

Issue New Certificate for **Service foo**

Subject Name:

Expiration:

Certificate Signing Request:

Get (Download) Certificate when done.