

Key:

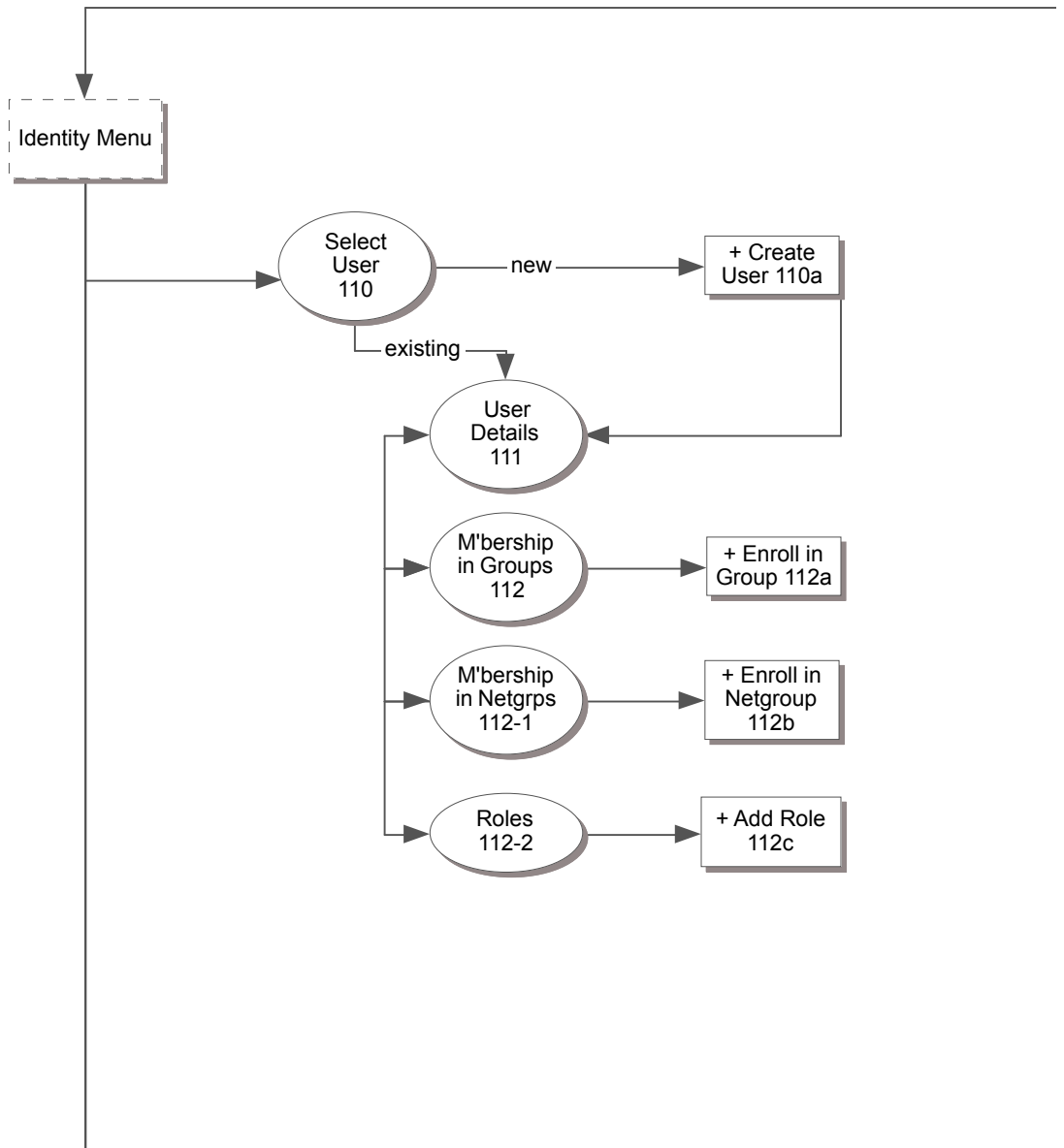
Logical Grouping - not a page

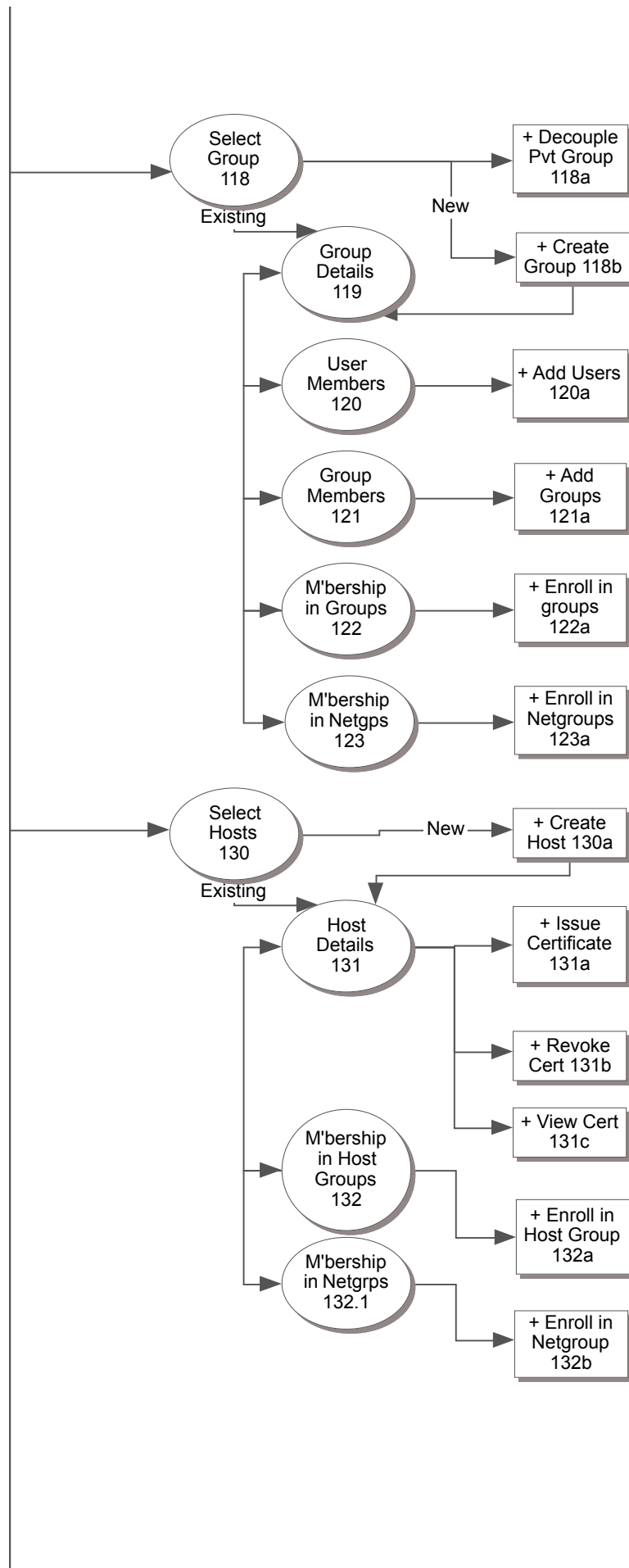
Regular Page

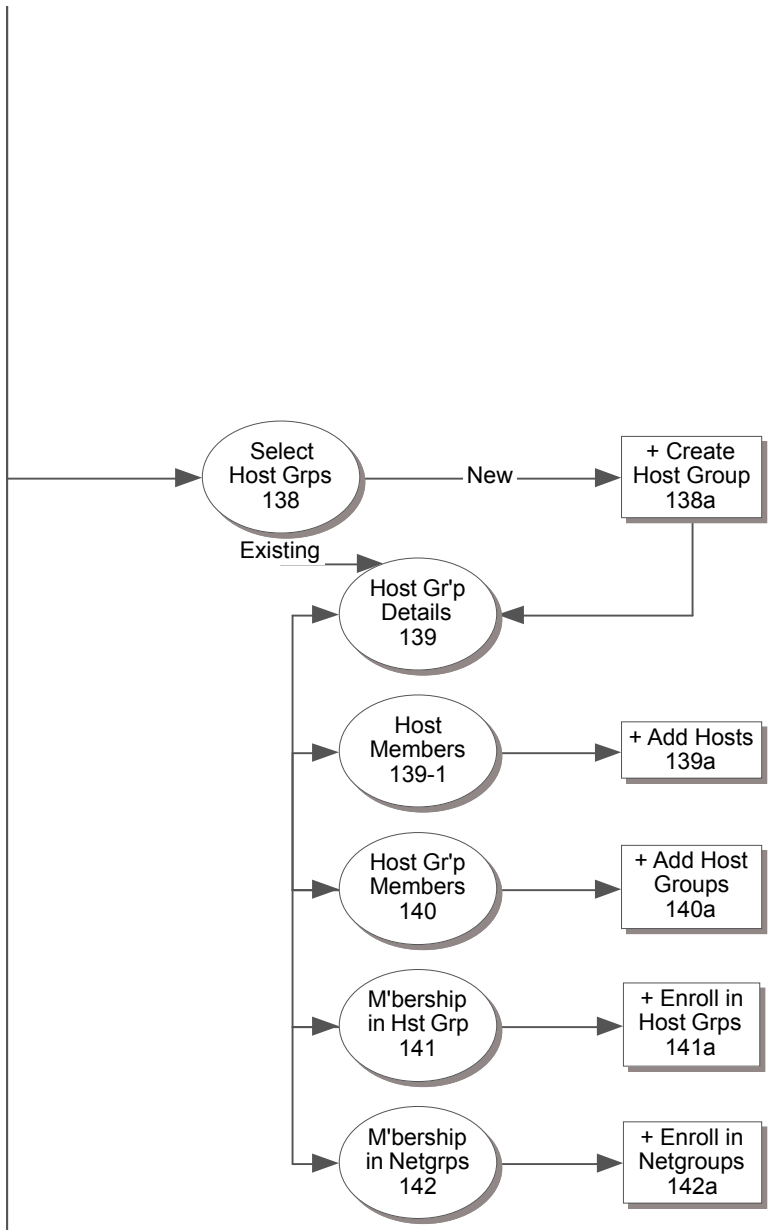
Modal form above screen

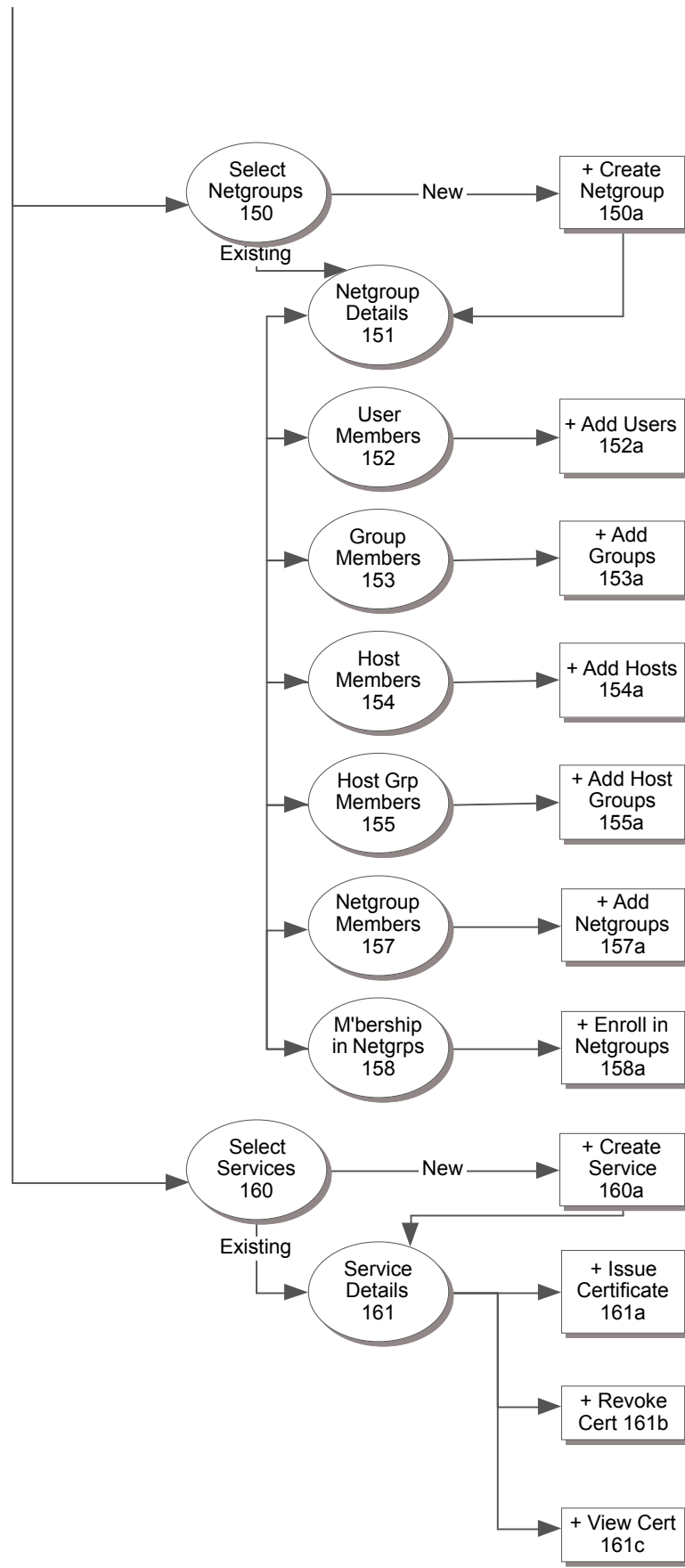
? As yet unspecified

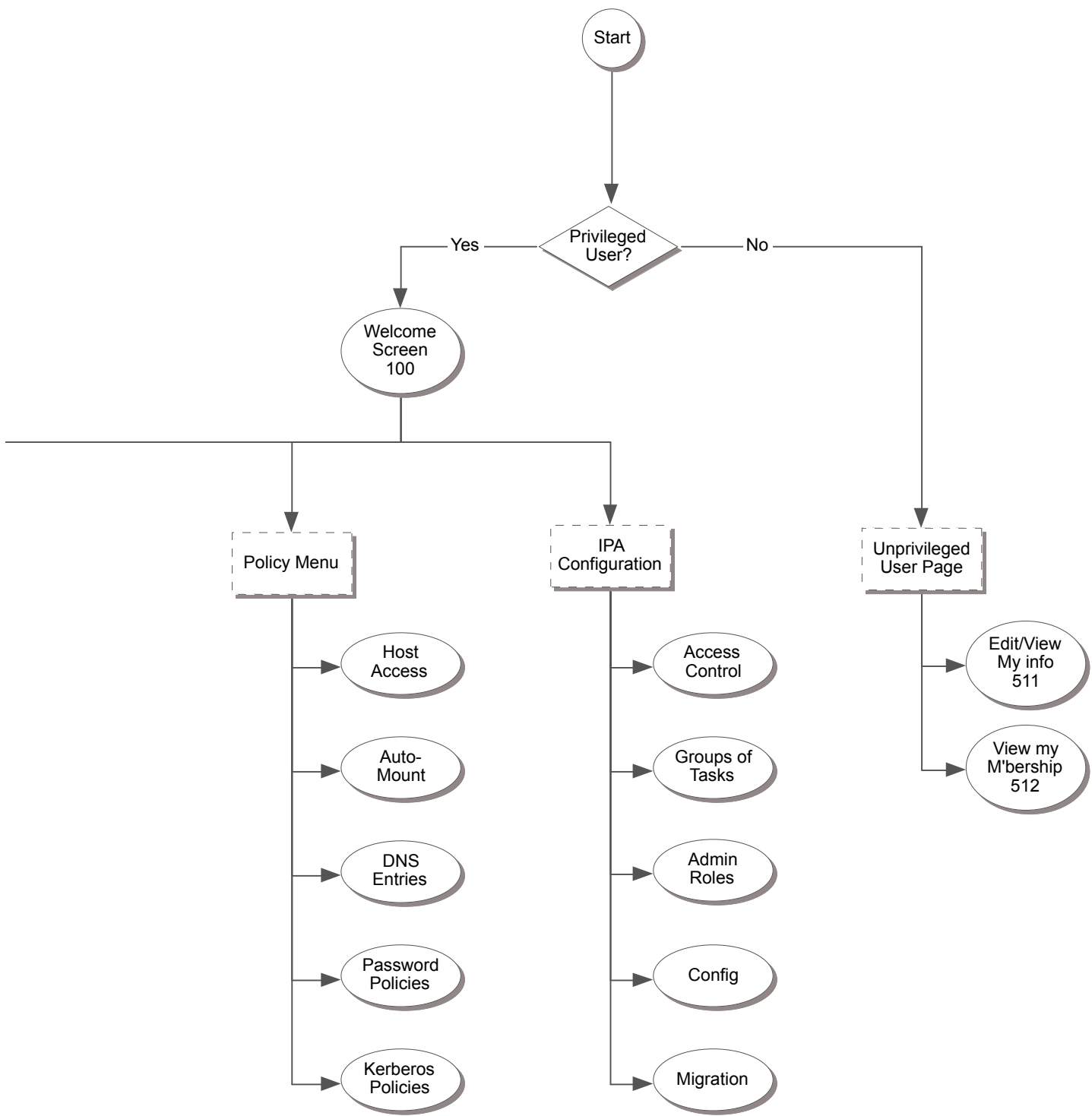
Date: 16-July-2010

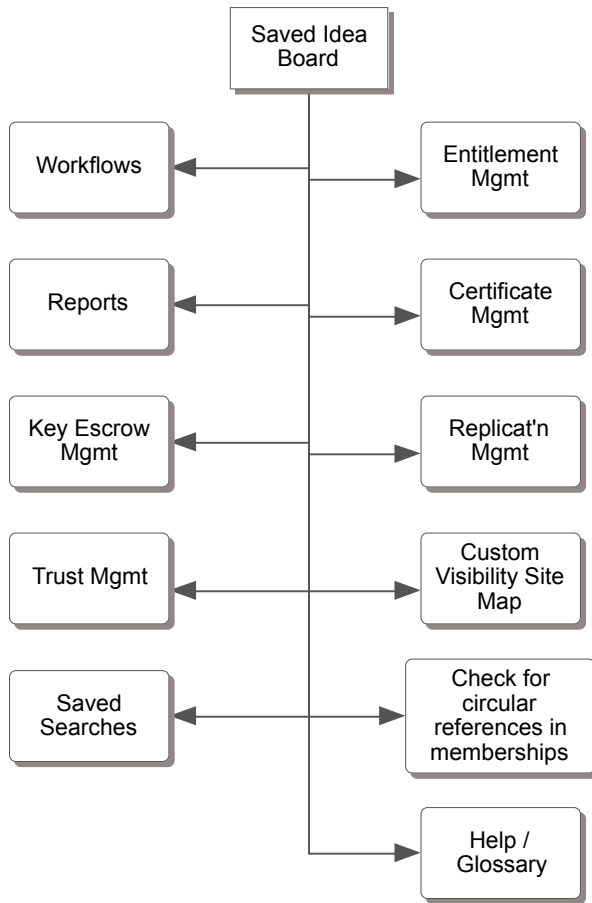












Find Users
Screen 110

Identities Policies IPA Config Banner

Manage: Users Groups Hosts Host Groups Netgroups Services

Select User:

User	First Name	Last Name	Active?	eMail	Phone	Job Title	Quick Links
							<input type="button" value="D"/> <input type="button" value="EG"/> <input type="button" value="EN"/> <input type="button" value="R"/>
							<input type="button" value="D"/> <input type="button" value="EG"/> <input type="button" value="EN"/> <input type="button" value="R"/>

Message Area

User Details **Enrollment in Groups**
 Enrollment in Netgroups **Roles**



User: New User
Screen 110a

Create New User:

User ID:

First Name:

Last Name:



User Details
111

Identities Policies IPA Config Banner

Manage: Users Groups Hosts Host Groups Netgroups Services

Managing User: Pat D. Bunny

View User: Details Enrollment in **Groups** Enrollment in **Netgroups** **Roles**

Reset Save Changes

Work Area for Users

Reset Save Changes



Memberships
in Groups
112

Identities Policies IPA Config Banner

Manage: Users Groups Hosts Host Groups Netgroups Services

Managing User: Pat D. Bunny

User: Details Enrollment in Groups Enrollment in Netgroups Roles

Find Group(s)

Group	GID	Description
-------	-----	-------------

Message Area



User: Enroll in Groups
Screen 112a

Enroll User Pat D. Bunny in Group(s)

Group	GID	Description		Prospective Group Enrollment(s)
Admin	1234	All IT Administrators		<== Commuters
Westford	N/A	All employees living i...	==>	<== Legal Dept.
Developers	N/A	Internal and External ...	==>	

Message Area

* Enter group name and press Find Groups
* Click "==" to tag each group you want to enroll in
* Click "<==" to remove improperly tagged groups



Memberships
in Netgroups
112-1

Identities Policies IPA Config Banner

Manage: Users Groups Hosts Host Groups Netgroups Services

Managing User: Pat D. Bunny

User: Details Enrollment in Groups Enrollment in Netgroups Roles

Find Netgroup(s)

Netgroup	Description

Message Area



User: Enroll in Netgroup
Screen 112b

Enroll **User** Pat D. Bunny in **Netgroup(s)**

Netgroup	Description		Prospective Netgroup Enrollment(s)
Admin	All IT Administrator's Hosts		<== Public Access
Westford	All hosts in Westford	==>	<== Legal Dept Hosts
Developers	All protected developer ho...	==>	

Message Area

* Enter netgroup name and press Find Netgroups
* Click "==" to tag each netgroup you want to enroll in
* Click "<==" to remove improperly tagged netgroups

Roles
112-2

Identities Policies **IPA Config** Banner

Manage: Users Groups Hosts Host Groups Netgroups Services

Managing User: Pat D. Bunny

User: Details Enrollment in Groups Enrollment in Netgroups Roles

Find Role(s)

Role	Description
------	-------------

Message Area



User: Add Roles
Screen 112c

Add **Role(s)** to **User Pat D. Bunny**

Role	Description	Prospective Roles(s)
Admin L1	Basic functions for entry le...	<== Basic Employee
Master Admin	All privileges	==>
Developer	Access to developer asset...	==>

Message Area

* Enter role name and press Find Roles
* Click "==>" to tag each role you want to add
* Click "<==" to remove improperly tagged roles



Find Groups
Screen 118

Identities Policies IPA Config Banner

Manage: Users Groups Hosts Host Groups Netgroups Services

Select Group:

Find Group(s) - Delete Group(s) + Create New Group

Group	GID	Description	Quick Links
			D MU MG EG EN
			D MU MG EG EN

Show Public Groups Show Private Groups

Message Area

D Group Details MU Member Users
MG Member Groups EG Enrollment in other Groups
EN Enrollment in Netgroups



User: New Group
Screen 118a

Create New **Group**:

Group Name:

Cancel Add **Group** then Return Add **Group** then Create another Add **Group** then Edit **Group**





Find Groups
118 - alt

Identities Policies IPA Config Banner

Manage: Users Groups Hosts Host Groups Netgroups Services

Select Group:

Group	GID	Description
-------	-----	-------------

Show Public Groups Show Private Groups Message Area



Decouple Private Group
Screen 118a

Decouple **Private Group** Foo from **User** Pat D. Bunny

Alert: This is an advanced operation and can not be un-done.
To confirm your intention to decouple private group Foo from user Pat D. Bunny, check the box below, and click the "Decouple" button.

Decouple **Private Group** Foo

Cancel Decouple

Group Details
119

Identities Policies IPA Config Banner

Manage: Users Groups Hosts Host Groups Netgroups Services

Managing Group: Admin

View Group: Details Member **Users** Member **Groups** Enrollment in other **Groups** Enrollment in **Netgroups**

Group Details:

Group Name:

Description:

This is a POSIX Group

Enter GID manually:

Reset Save Changes

Reset Save Changes



User Members
Screen 120

Identities Policies IPA Config Banner

Manage: Users Groups Hosts Host Groups Netgroups Services

Managing Group: Admin

Group: Details Member Users Member Groups Enrollment in other Groups Enrollment in Netgroups

Find User(s)

User	First Name	Last Name	Job Title
------	------------	-----------	-----------

Message Area



Group: Add Users
Screen 120a

Add User(s) to Group Foo

User	Last	First	Department		Prospective User(s)
JAbel	Abel	James	Finance		<== Freddy Thomlinson
JoAbel	Abel	Jonas	Engineering	==>	<== Mary Baker
MBaker	Baker	Mary	HR	==>	

Message Area

* Enter user name and press Find Users
* Click "==>" to tag each user you want to add
* Click "<==" to remove improperly tagged users





Group Members
Screen 121

Identities Policies IPA Config **Banner**

Manage: Users Groups Hosts Host Groups Netgroups Services

Managing Group: Admin

Group: Details Member Users Member Groups Enrollment in other Groups Enrollment in Netgroups

Group	GID	Description

Message Area



Group: Add Groups
Screen 121a

→ Add **Group(s)** to **Group Foo**

Group	GID	Description	Prospective Group(s)
Admin	1234	All IT Administrators	<== Commuters
Westford	N/A	All employees living i...	<== Legal Dept.
Developers	N/A	Internal and External ...	==>

Message Area

* Enter group name and press Find Groups
* Click "==" to tag each group you want to add
* Click "<==" to remove improperly tagged groups

Group Members
Screen 122

Identities Policies IPA Config Banner

Manage: Users Groups Hosts Host Groups Netgroups Services

Managing Group: Admin

Group: Details Member Users Member Groups Enrollment in other Groups Enrollment in Netgroups

Find Group(s)

Name	GID	Description
------	-----	-------------

Message Area

Group: Enroll in Groups
Screen 122a

Enroll **Group** Foo in other **Group**(s)

Group	GID	Description	Prospective Group Enrollment(s)
Admin	1234	All IT Administrators	<== Commuters
Westford	N/A	All employees living i...	<== Legal Dept.
Developers	N/A	Internal and External ...	==>

Message Area

* Enter group name and press Find Groups
* Click "==>" to tag each group you want to enroll in
* Click "<==" to remove improperly tagged groups

Netgroup Members
Screen 123

Identities Policies IPA Config Banner

Manage: Users Groups Hosts Host Groups Netgroups Services

Managing Group: Admin

Group: Details Member Users Member Groups Enrollment in other Groups Enrollment in Netgroups

Netgroup	Description

Message Area



Group: Enroll in Netgroup
Screen 123a

Enroll Group Foo in Netgroup(s)

Netgroup	Description		Prospective Netgroup Enrollment(s)
Admin	All IT Administrator's Hosts		<== Public Access
Westford	All hosts in Westford	==>	<== Legal Dept Hosts
Developers	All protected developer ho...	==>	

Message Area

* Enter netgroup name and press Find Netgroups
* Click "==" to tag each netgroup you want to enroll in
* Click "<==" to remove improperly tagged netgroups

Identities Policies IPA Config Banner

Manage: Users Groups Hosts Host Groups Netgroups Services

Select Host:

Find Host(s) Delete Host(s) Create New Host

Host	Comment	Enrolled?	Managed?	Quick Links
				<input type="button" value="D"/> <input type="button" value="EX"/> <input type="button" value="EN"/>
				<input type="button" value="D"/> <input type="button" value="EX"/> <input type="button" value="EN"/>

Message Area

Host Details Enrollment in Host Groups
 Enrollment in Netgroups



User: New Host
Screen 130a

Create New Host:

Fully-Qualified Domain Name:



Identities | Policies | IPA Config | Banner

Manage: | Users | Groups | Hosts | Host Groups | Netgroups | Services

Managing Host: ZimbraMail

View Host: Details Enrollment in Host Groups Enrollment in Netgroups

Host Details:

Fully-Qualified Domain Name:

Enrolled By:

Date:

Description:

Enrollment:

Status: Kerberos Key Present, Host Enrolled Kerberos Key Not Present

Enroll via One-Time-Password:

Host Certificate:

Status: Valid Certificate Present Certificate Revoked: No Valid Certificate:

Name:

Services:

[Manage Services](#) for this Host

NB: The "Restore" button next to Certificate Revoked only appears when the red light is on, and the reason for revokation is "Hold"

Host: Revoke Cert
Screen 131b

Revoke Certificate CertSubjectName for Host Foo

Note: To confirm your intention to revoke this certificate, select a reason from the pull-down list, and click the "Revoke" button.

Reason for Revocation:

Host: View Cert
Screen 131c

Certificate FooBarCertificate for Host Foo

Issued To:
Common Name abcd
Organization <asdf>
Organizational Unit Apache
Serial Number 12:34

Issued By:
Common Name abd
Organization abcd
Organizational Unit <asdf>

Dates:
Issued On: 7-Mar-2010
Expires On: 1-Jan=2030

Fingerprints
SHA1 Fingerprint 114312431243134
MD5 Fingerprint 123414351434353452

Host: Issue New Cert
Screen 131a

Issue New Certificate for Host foo

Subject Name:

Expiration:

Certificate Signing Request:

Get (Download) Certificate when done.



Host Group
Memberships
Screen 132

Identities Policies IPA Config Banner

Manage: Users Groups Hosts Host Groups Netgroups Services

Managing Host: Zimbrmail

Host: Details Enrollment in Host Groups Enrollment in Netgroups

Find Host Group(s)

Host Group	Description

Message Area



Host: Enroll in Host Group
Screen 132a

Enroll Host Foo in Host Group(s)

Host Group	Description	Prospective Host Group Enrollment(s)
Admin	All IT Administrator's Hosts	<== Public Access
Westford	All hosts in Westford	==> <== Legal Dept Hosts
Developers	All protected developer ho...	==>

Message Area

* Enter host group name and press Find Host Groups
* Click "==" to tag each host group you want to enroll in
* Click "<==" to remove improperly tagged host groups





Netgroup
Memberships
Screen 132.1

Identities Policies IPA Config **Banner**

Manage: Users Groups Hosts **Host Groups** Netgroups Services

Managing Host: ZimbraMail

Host: Details Enrollment in Host Groups Enrollment in Netgroups

Find Netgroup(s)

Netgroup	Description

Message Area



Host: Enroll in Netgroup
Screen 132b

Enroll Host Foo in Netgroup(s)

Netgroup	Description	Prospective Netgroup Enrollment(s)
Admin	All IT Administrator's Hosts	<== Public Access
Westford	All hosts in Westford	==> <== Legal Dept Hosts
Developers	All protected developer ho...	==>

Message Area

* Enter netgroup name and press Find Netgroups
* Click "==" to tag each netgroup you want to enroll in
* Click "<==" to remove improperly tagged netgroups

Find Host Groups
Screen 138

Identities Policies IPA Config Banner

Manage: Users Groups Hosts Host Groups Netgroups Services

Select Host Group:

Host Group	Description	Quick Links
		<input type="button" value="D"/> <input type="button" value="MH"/> <input type="button" value="MX"/> <input type="button" value="EX"/> <input type="button" value="EN"/>
		<input type="button" value="D"/> <input type="button" value="MH"/> <input type="button" value="MX"/> <input type="button" value="EX"/> <input type="button" value="EN"/>

Message Area

Host Group Details Member Hosts
 Member Host Groups Enrollment in other Host Groups
 Enrollment in Netgroups



User: New Host Group
Screen 138a

Create New **Host Group**:

Host Group Name:



Host Group Details
Screen 139

Identities Policies IPA Config Banner

Manage: Users Groups Hosts Host Groups Netgroups Services

Managing Host Group: Dev-cluster-2

View Host Group: Details Member Hosts Member Host Groups Enrollment in other Host Groups Enrollment in Netgroups

Host Group Details:

Host Group Name:

Description:

Reset Save Changes

Reset Save Changes



Host Members
Screen 139-1

BannerIdentities Policies IPA Config

Manage:Users Groups Hosts Host Groups Netgroups Services

Managing Host Group: Dev-cluster-2

Host Group: Details Member Hosts Member Host Groups Enrollment in other Host Groups Enrollment in Netgroups

Find Host(s) - Remove Host(s) + Add Host(s)

Host	Comment	Enrolled?	Managed?

Message Area



Host Group: Add Hosts
Screen 139a

Add Host(s) to Host Group Foo

Host	Description		Prospective Host(s)	Managed?
Cheech and Ch...	(Unmanaged Host)	==>	<== Developer153	Y
Admin12	Host dedicated to IT Admin...	==>	<== Barnacre Corner	N
Westford13	Host deployed in Westford	==>		
Developer23	Host used by developer st...	==>		

Message Area

* Enter host name and press Find Hosts
* Results will contain an entry for the search term as an unmanaged host when there is no exact match.
* Click "==" to tag each host you want to add
* Click "<==" to remove improperly tagged hosts

Identities Policies IPA Config Banner

Manage: Users Groups Hosts **Host Groups** Netgroups Services

Managing Host Group: Dev-cluster-2

Host Group: Details Member Hosts **Member Host Groups** Enrollment in other Host Groups Enrollment in Netgroups

Find Host Group(s) Remove Host Group(s) Add Host Group(s)

Host Group	Description

Message Area



Host Groups: Add Host Group
Screen 140a

Add Host Group(s) to Host Group Foo

Find Host Group(s)

Host Group	Description	Prospective Host Group(s)
Admin	All IT Administrator's Hosts	<== Public Access
Westford	All hosts in Westford	==> <== Legal Dept Hosts
Developers	All protected developer ho...	==>

Message Area

* Enter host group name and press Find Host Groups
* Click "==" to tag each host group you want to add
* Click "<==" to remove improperly tagged host groups

Cancel Add Host Group(s)



Memberships in
Host Groups
Screen 141

Identities Policies IPA Config Banner

Manage: Users Groups Hosts Host Groups Netgroups Services

Managing Host Group: Dev-cluster-2

Host Group: Details Member Hosts Member Host Groups Enrollment in other Host Groups Enrollment in Netgroups

Host Group	Description
------------	-------------

Message Area



Host Group: Enroll in Host Groups
Screen 141a

Enroll **Host Group** Foo in other **Host Group(s)**

Host Group	Description		Prospective Host Group Enrollment(s)
Admin	All IT Administrator's Hosts		<== Public Access
Westford	All hosts in Westford	==>	<== Legal Dept Hosts
Developers	All protected developer ho...	==>	

Message Area

* Enter host group name and press Find Host Groups
* Click "==" to tag each host group you want to enroll in
* Click "<==" to remove improperly tagged host groups

Netgroup Members
Screen 142

Identities Policies IPA Config Banner

Manage: Users Groups Hosts Host Groups Netgroups Services

Managing Host Group: Dev-cluster-2

Host Group: Details Member Hosts Member Host Groups Enrollment in other Host Groups Enrollment in Netgroups

Netgroup	Description
----------	-------------

Message Area



Host Group: Enroll in Netgroup
Screen 142a

Enroll Host Group Foo in Netgroup(s)

Netgroup	Description	Prospective Netgroup Enrollment(s)
Admin	All IT Administrator's Hosts	<== Public Access
Westford	All hosts in Westford	==> <== Legal Dept Hosts
Developers	All protected developer ho...	==>

Message Area

* Enter netgroup name and press Find Netgroups
* Click "==" to tag each netgroup you want to enroll in
* Click "<==" to remove improperly tagged netgroups

Find Netgroups
Screen 150

Identities Policies IPA Config Banner

Manage: Users Groups Hosts Host Groups Netgroups Services

Select Netgroup:

Netgroup	Description	Quick Links
		<input type="button" value="D"/> <input type="button" value="MU"/> <input type="button" value="MG"/> <input type="button" value="MH"/> <input type="button" value="MX"/> <input type="button" value="MN"/> <input type="button" value="EN"/>
		<input type="button" value="D"/> <input type="button" value="MU"/> <input type="button" value="MG"/> <input type="button" value="MH"/> <input type="button" value="MX"/> <input type="button" value="MN"/> <input type="button" value="EN"/>

Message Area

Netgroup Details **Member Users** **Member Groups**
 Member Hosts **Member Host Groups**
 Member Netgroups **Enrollment in other Netgroups**



User: New Netgroup
Screen 150a

Create New **Netgroup**:

Netgroup Name:



Netgroup
Details 151

Identities Policies IPA Config Banner

Manage: Users Groups Hosts Host Groups Netgroups Services

Managing Netgroup: Foo

View Netgroup: Details Member Users Member Groups Member Hosts Member Host Groups Member Netgroups Enrollment in other Netgroups

Netgroup Details:

Netgroup Name:

Domain Name:

Description:

Reset Save Changes

Reset Save Changes

User Members
Screen 152

Identities Policies IPA Config **Banner**

Manage: Users Groups Hosts Host Groups Netgroups **Services**

Managing Netgroup: Foo

Netgroup: Details Member Users Member Groups Member Hosts Member Host Groups Member Netgroups Enrollment in other Netgroups

User	First Name	Last Name	Job Title

Message Area



Netgroup: Add Users
Screen 152a

Add User(s) to Netgroup Foo

Find Users(s)

User	Last	First	Department		Prospective User(s)
JAbel	Abel	James	Finance		<== Freddy Thomlinson
JoAbel	Abel	Jonas	Engineering	==>	<== Mary Baker
MBaker	Baker	Mary	HR	==>	

Message Area

* Enter user name and press Find Users
* Click "==" to tag each user you want to add
* Click "<==" to remove improperly tagged users

Cancel Add User(s)

Group Members
Screen 153

Identities Policies IPA Config **Banner**

Manage: Users Groups Hosts Host Groups **Netgroups** Services

Managing Netgroup: Foo

Netgroup: Details Member Users Member Groups Member Hosts Member Host Groups Member Netgroups Enrollment in other Netgroups

Group	GID	Description

Message Area



Netgroup: Add Groups
Screen 153a

Add Group(s) to Netgroup Foo

Find Group(s)

Group	GID	Description	Prospective Group(s)
Admin	1234	All IT Administrators	<== Commuters
Westford	N/A	All employees living i...	<== Legal Dept.
Developers	N/A	Internal and External ...	==>

Message Area

* Enter group name and press Find Groups
* Click "==" to tag each group you want to add
* Click "<==" to remove improperly tagged grouped

Cancel Add Group(s)

Host Members
Screen 154

Identities Policies IPA Config **Banner**

Manage: Users Groups Hosts Host Groups Netgroups Services

Managing Netgroup: Foo

Netgroup: Details Member Users Member Groups Member Hosts Member Host Groups Member Netgroups Enrollment in other Netgroups

Host	Comment	Enrolled?	Managed?
------	---------	-----------	----------

Message Area



Netgroup: Add Host
Screen 154a

Add Host(s) to Netgroup Foo

Host	Description		Prospective Host(s)	Managed?
Cheech and Ch...	(Unmanaged Host)	==>	<== Developer153	Y
Admin12	Host dedicated to IT Admin...	==>	<== Barnacre Corner	N
Westford13	Host deployed in Westford	==>		
Developer23	Host used by developer st...	==>		

Message Area

* Enter host name and press Find Hosts
* Results will contain an entry for the search term as an unmanaged host when there is no exact match.
* Click "==" to tag each host you want to add
* Click "<==" to remove improperly tagged hosts

Identities Policies IPA Config **Banner**

Manage: Users Groups Hosts **Host Groups** Netgroups Services

Managing Netgroup: Foo

Netgroup: Details Member Users Member Groups Member Hosts Member Host Groups Member Netgroups Enrollment in other Netgroups

Find Host Group(s) - Remove Host Group(s) + Add Host Group(s)

Host Group	Description

Message Area



Netgroups: Add Host Group
Screen 155a

Add Host Group(s) to Netgroup Foo

Host Group	Description		Prospective Host Group(s)
Admin	All IT Administrator's Hosts		<== Public Access
Westford	All hosts in Westford	==>	<== Legal Dept Hosts
Developers	All protected developer ho...	==>	

Message Area

* Enter host group name and press Find Host Groups
* Click "==" to tag each host group you want to add
* Click "<==" to remove improperly tagged host groups



Netgroup Members
Screen 157

Identities Policies IPA Config Banner

Manage: Users Groups Hosts Host Groups Netgroups Services

Managing Netgroup: Foo

Netgroup: Details Member Users Member Groups Member Hosts Member Host Groups Member Netgroups Enrollment in other Netgroups

Netgroup	Description
----------	-------------

Message Area



Netgroups : Add Netgroup
Screen 157a

Add Netgroup(s) to Netgroup Foo

Netgroup	Description	Prospective Netgroup(s)
Admin	All IT Administrator's Hosts	<== Public Access
Westford	All hosts in Westford	<== Legal Dept Hosts
Developers	All protected developer ho...	==>

Message Area

* Enter netgroup name and press Find Netgroups
* Click "==" to tag each netgroup you want to add
* Click "<==" to remove improperly tagged netgroups

Netgroup Members
Screen 158

Identities Policies IPA Config Banner

Manage: Users Groups Hosts Host Groups Netgroups Services

Managing Netgroup: Foo

Netgroup: Details Member Users Member Groups Member Hosts Member Host Groups Member Netgroups Enrollment in other Netgroups

Find Netgroup(s)

Netgroup	Description
----------	-------------

Message Area



Netgroup: Enroll in Netgroups
Screen 158a

Enroll **Netgroup** Foo in other **Netgroup(s)**

Netgroup	Description	Prospective Netgroup Enrollment(s)
Admin	All IT Administrator's Hosts	<== Public Access
Westford	All hosts in Westford	==> <== Legal Dept Hosts
Developers	All protected developer ho...	==>

Message Area

* Enter netgroup name and press Find Netgroups
* Click "==" to tag each netgroup you want to enroll in
* Click "<==" to remove improperly tagged netgroups

Find Services
Screen 160

Identities Policies IPA Config Banner

Manage: Users Groups Hosts Host Groups Netgroups Services

Select Service:

Service Principle	Service Type	Fully Qualified Domain	Quick Links
			<input type="button" value="D"/>
			<input type="button" value="D"/>

Message Area

Service Details



User: New Service
Screen 160a

Create New **Service**:

Fully-Qualified Domain Name:

Service Name:

[become active if user chooses: "New" above]

NB: If the user presses "Resolve", and the name can not be resolved, then the user can still proceed.

Identities Policies IPA Config Banner

Manage: Users Groups Hosts Host Groups Netgroups Services

Managing Service

View Service: Details

Reset Save Changes

Service Details:

Fully-Qualified Domain Name:

Service Name:

Provisioning:

Status: Kerberos Key Present, Service Provisioned Delete Key, Unprovision

Kerberos Key Not Present

Service Certificate:

Status: Valid Certificate Present Get Revoke View

Name:

Certificate Revoked: Restore

No Valid Certificate: New Certificate

Host:

[Manage Host](#) for this Service

Reset Save Changes

NB: The "Restore" button next to Certificate Revoked only appears when the red light is on, and the reason for revocation is "Hold"

Service: Revoke Cert
Screen 161b

Revoke Certificate CertSubjectName for **Service Foo**

Note: To confirm your intention to revoke this certificate, select a reason from the pull-down list, and click the "Revoke" button.

Reason for Revocation:

Service: View Cert
Screen 161c

Certificate FooBarCertificate for **ServiceFoo**

Issued To:
Common Name: abcd
Organization: <asdf>
Organizational Unit: Apache
Serial Number: 12:34

Issued By:
Common Name: abd
Organization: abcd
Organizational Unit: <asdf>

Dates:
Issued On: 7-Mar-2010
Expires On: 1-Jan=2030

Fingerprints
SHA1 Fingerprint: 114312431243134
MD5 Fingerprint: 123414351434353452

Service: Issue New Cert
Screen 161a

Issue New Certificate for **Service foo**

Subject Name:

Expiration:

Certificate Signing Request:

Get (Download) Certificate when done.